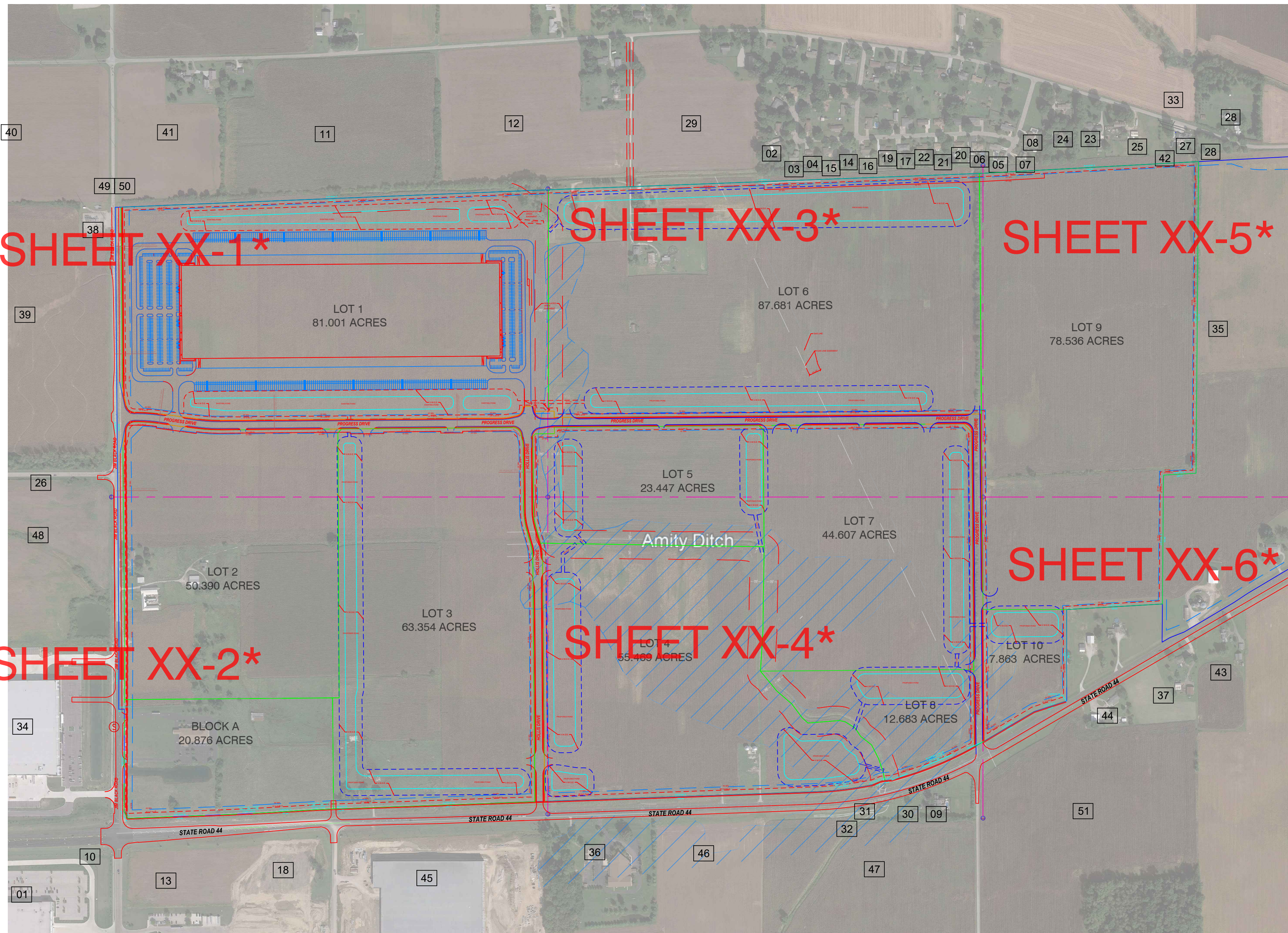


FILE PATH: C:\Studio A Projects\220001 I-65 South Commerce Park Building 2&3.dwg PRIMARY PLAT MODIFIED SEPT 2023 cover.dwg PLOT SCALE: 1:2,5849 PLOT DATE: 11/21/2023 2:16:22 PM PLOTTED BY: ANMMO



I-65 SOUTH COMMERCE PARK PRIMARY PLAT

PREPARED FOR:
DEVELOPER/OWNER: SUNBEAM DEVELOPMENT CORPORATION
ATTN: JUSTIN FURR
11800 EXIT FIVE PARKWAY
FISHERS, INDIANA 46037

DEVELOPMENT STANDARDS:
ZONE: IG—INDUSTRIAL GENERAL

ALL LOT STANDARDS
MIN. LOT AREA: 1 ACRE
MAX LOT AREA: NONE
MIN LOT FRONTAGE: 100'
MAX LOT COVERAGE: 85%
MIN. FRONT SETBACK: 25'-50'
MIN. SIDE SETBACK: 25'
MIN. REAR SETBACK: 25'
MAX STRUCTURE HEIGHT: 50'
TOTAL OF NEW PUBLIC ROAD: 4650'(PROGRESS DRIVE)
1561'(HOLLIS DRIVE)

MAXIMUM NUMBER OF LOTS=10

PARCEL NUMBERS:
41-07-17-021-006.000-018 41-07-17-011-001.000-018 41-07-17-012-005.003-018
41-07-17-012-005.001-018 41-07-17-012-005.000-018 41-07-17-014-001.000-018
41-07-16-023-001.000-018 41-07-17-041-001.000-018 41-07-16-022-009.000-018
41-07-17-032-002.000-018 41-07-17-032-005.000-018 41-07-17-032-004.000-018
41-07-17-032-003.000-018

FLOOD MAP DESIGNATION:
THE ACCURACY OF THE FLOOD HAZARD DATA IS SUBJECT TO MAP SCALE UNCERTAINTY AND TO ANY OTHER UNCERTAINTY IN LOCATION OR ELEVATION ON THE REFERENCED FLOOD INSURANCE RATE MAP. ACCORDING TO THE FEMA FLOOD INSURANCE RATE MAPS 18081C0232D DATED AUGUST, 2007 THE SITE PARTIALLY FALLS WITHIN ZONE A, WHICH INDICATES THAT IT HAS BEEN DETERMINED TO BE PARTIALLY SUBJECT TO THE 1% ANNUAL CHANCE FLOODPLAIN.

MAP ID	Parcel ID	OwnerName
01	41-07-18-044-015.001-018	SUNBEAM DEVELOPMENT CORPORATION
02	41-07-08-043-006.000-017	CARRILLO REYNALDO M
03	41-07-08-043-007.000-017	WAGNER CHRISTOPHER S
04	41-07-08-043-008.000-017	BUCKLER DAVID A & ROBIN L
05	41-07-09-033-039.000-017	SPEARS JOHN R & JAN E
06	41-07-08-044-038.000-017	COOPER MARTY C
07	41-07-09-033-040.000-017	YADEN JERRY P & DORIS J
08	41-07-09-033-041.000-017	HOUGLAND PHILIP L & LINDA J
09	41-07-17-041-013.001-017	HOTOPP WILLIAM J & DEBRA L
10	41-07-18-044-015.002-018	STATE OF INDIANA
11	41-07-08-033-012.000-017	SUNBEAM DEVELOPMENT CORPORATION
12	41-07-08-034-016.000-017	SUNBEAM DEVELOPMENT CORPORATION
13	41-07-17-033-004.000-017	CHANG HUE LEHA & FU LONG
14	41-07-08-044-031.000-017	WESSELER ALLEN R
15	41-07-08-044-030.000-017	LUCAS STEVEN R
16	41-07-08-044-032.000-017	SHUMAR RICHARD D & WALDEN JENNIFER L & ROBERT R
17	41-07-08-044-034.000-017	GARRISON BUSINESS PROPERTIES LLC
18	41-07-17-033-003.000-018	SOUTHPOINT FARM LLC
19	41-07-08-044-033.000-017	SUNMAN DANIEL R & AUDREY M
20	41-07-08-044-037.000-017	LEE RAYMOND D & JO ANN
21	41-07-08-044-036.000-017	FEWELL JUDITH A (LIFE ESTATE) & FEWELL JULIE ANNE & DOI
22	41-07-08-044-035.000-017	NEWTON ROSE M AS TRUSTEE OF THE REVOCABLE TRUST OF
23	41-07-09-033-010.000-017	NEFF JAMES C & SUSANNA M
24	41-07-09-033-009.000-017	BEACH JASON E & KRISTINA K
25	41-07-09-033-011.000-017	MILLER EDWARD J & MELOYA A
26	41-07-18-014-003.000-018	CITY OF FRANKLIN
27	41-07-09-033-014.000-017	EHRINGER JAMES M & LAURA R
28	41-07-09-034-001.000-017	RICHTER MAURICE D & BRENDA D
29	41-07-08-042-001.000-017	CASPER ELLA E & EICHORN ADAM L
30	41-07-17-041-013.002-017	HOTOPP WILLIAM J & DEBRA L
31	41-07-17-041-013.005-017	STATE OF INDIANA
32	41-07-17-041-013.003-017	STATE OF INDIANA
33	41-07-09-032-008.001-017	TREGO DEANNA CAROL & OWENS THOMAS ANDREW
34	41-07-18-041-002.000-018	SUNBEAM DEVELOPMENT CORPORATION
35	41-07-16-012-001.000-017	SUNBEAM DEVELOPMENT CORPORATION
36	41-07-17-043-002.000-017	APOSTOLIC GOSPEL CHURCH INC
37	41-07-16-032-004.000-017	ARMSTRONG CATHERINE ANNE & MARK
38	41-07-18-011-001.000-018	HOOSIER ENERGY REC INC
39	41-07-18-011-002.000-018	PURE FRANKLIN LLC
40	41-07-07-044-025.000-017	MC ALPIN GLENN K & CONSTANCE A
41	41-07-08-033-010.000-017	MC ALPIN GLENN K & CONSTANCE A
42	41-07-09-033-013.000-018	SUNBEAM DEVELOPMENT CORP
43	41-07-16-031-002.000-017	ROEHLER DUSTIN LEE
44	41-07-16-032-003.000-017	R S C PROPERTIES A GENERAL PARTNERSHIP
45	41-07-17-034-002.000-018	LA CROSSROADS I OWNER LLC
46	41-07-17-043-001.000-017	MITCHELL ROBERT D
47	41-07-17-044-013.000-017	RMJ PARTNERSHIP LLC
48	41-07-18-014-004.000-018	THE TRUSTEES OF IVY TECH COMMUNITY COLLEGE OF INDIANA
49	41-07-07-044-001.000-017	CITY OF FRANKLIN
50	41-07-08-033-001.000-017	CITY OF FRANKLIN
51	41-07-16-033-002.000-018	OAKLEAF FARMS LLC

LEGAL DESCRIPTION:
A part of the Northwest and Southwest Quarters of Section 16 and a part of Section 17, all in Township 12 North, Range 5 East, in Needham Township, Johnson County, Indiana, being more particularly described as follows:
BEGINNING at a Railroad spike marking the Northwest corner of the Northwest Quarter of said Section 17; thence North 87 degrees 40 minutes 37 seconds East (bearings based on the Indiana State Plane Coordinate System, East Zone, NAD 83) along the North line thereof a distance of 2664.25 feet to the Northwest corner of the Northeast Quarter of said Section 17; thence North 87 degrees 50 minutes 01 seconds East along the North line thereof a distance of 2660.35 feet to a Stone marking the Northwest corner of the Northwest Quarter of said Section 16; thence North 86 degrees 53 minutes 58 seconds East along the North line thereof a distance of 1340.65 feet to a Stone marking the Northeast corner of the West Half of said Northwest Quarter; thence South 00 degrees 27 minutes 46 seconds West along the East line thereof a distance of 1914.79 feet to a 5/8 inch capped rebar marked "C2LS Firm #0035" marking the Southeast corner of a tract of land described in Instrument Number 2021-032217 in the Office of the Recorder of Johnson County, Indiana; thence South 86 degrees 41 minutes 29 seconds West along the South line thereof a distance of 200.17 feet to a capped "CKW" rebar marking the Northwest corner of Tract IV as described in Instrument Number 2021-016438 in said Recorder's Office; thence South 00 degrees 27 minutes 46 seconds West along the West line thereof a distance of 791.89 feet to a capped "CKW" rebar marking the Northeast corner of a tract of land described in Instrument Number 2021-025578 in said Recorder's Office, said point also being on the North line of the West Half of the Southwest Quarter of said Section 16; thence South 86 degrees 41 minutes 29 seconds West along the North line of said tract and the North line of the West Half of said Southwest Quarter a distance of 589.96 feet to a capped "CKW" rebar marking the Northwest corner of said tract; thence South 00 degrees 05 minutes 38 seconds East along the West line of said tract a distance of 560.11 feet to a point on the North right-of-way line of State Road 44 as described in said Instrument Number 2008-017214; (the following fourteen (14) courses continuing along said North right-of-way line) 1) thence South 59 degrees 20 minutes 26 seconds West a distance of 7.43 feet; 2) thence South 72 degrees 01 minutes 15 seconds West a distance of 205.00 feet; 3) thence South 59 degrees 20 minutes 26 seconds West a distance of 366.66 feet to a point on a curve having a radius of 2196.83 feet; 4) thence Southwesterly along said curve to the right an arc distance of 607.08 feet, said curve being subtended by a long chord having a bearing of South 67 degrees 15 minutes 26 seconds West and a length of 605.15 feet; 5) thence South 85 degrees 07 minutes 27 seconds West a distance of 62.96 feet; 6) thence South 67 degrees 23 minutes 50 seconds West a distance of 58.66 feet to a point on a curve having a radius of 2196.83 feet; 7) thence Southwesterly along said curve to the right an arc distance of 370.41 feet, said curve being subtended by a long chord having a bearing of South 83 degrees 08 minutes 00 seconds West and a length of 369.97 feet; 8) thence South 87 degrees 57 minutes 49 seconds West a distance of 1630.12 feet; 9) thence South 87 degrees 57 minutes 35 seconds West a distance of 1221.41 feet; 10) thence South 88 degrees 15 minutes 36 seconds West a distance of 102.76 feet to a point on a curve having a radius of 11547.16 feet; 11) thence Southwesterly along said curve to the left an arc distance of 173.06 feet, said curve being subtended by a long chord having a bearing of South 87 degrees 01 minutes 14 seconds West and a length of 173.06 feet; 12) thence South 86 degrees 35 minutes 23 seconds West a distance of 237.88 feet to a point on a curve having a radius of 11371.16 feet; 13) thence Southwesterly along said curve to the right an arc distance of 209.05 feet, said curve being subtended by a long chord having a bearing of South 87 degrees 07 minutes 07 seconds West and a length of 209.05 feet; 14) thence South 87 degrees 49 minutes 23 seconds West a distance of 643.05 feet to the East right-of-way line of County Road 500 East (Jim Black Road) as described on the Final Plat of South Central Business Plaza as recorded in Instrument Number 2005-032499 in said Recorder's Office; (the following two (2) courses continuing along said East right-of-way line of County Road 500 East) 1) thence North 28 degrees 34 minutes 49 seconds West a distance of 47.59 feet; 2) thence North 00 degrees 13 minutes 23 seconds East a distance of 628.82 feet to the North line of Lot 1 in said plat; thence South 87 degrees 56 minutes 21 seconds West along the North line thereof a distance of 35.03 feet to the West line of the Southwest Quarter of said Section 17; thence North 00 degrees 13 minutes 23 seconds East along the West line thereof a distance of 380.22 feet to a "Mag" nail marking the Southwest corner of the Northwest Quarter of said Section 17; thence North 00 degrees 28 minutes 30 seconds West along the West line thereof a distance of 2704.50 feet to the POINT OF BEGINNING. Containing 542.122 acres, more or less.

* "XX" DESIGNATES PRIMARY PLAT(PP) OR DEVELOPMENT PLAN(DP) ENLARGEMENT SHEETS

Studio A of Indianapolis
9511 East 96th Street
Indianapolis, IN 46256
(317) 585.0834
www.studioAindy.com

SITE/CIVIL/LANDSCAPE ARCHITECTURE

CERTIFIED BY

I-65 SOUTH COMMERCE PARK
CITY OF FRANKLIN, JOHNSON COUNTY, INDIANA

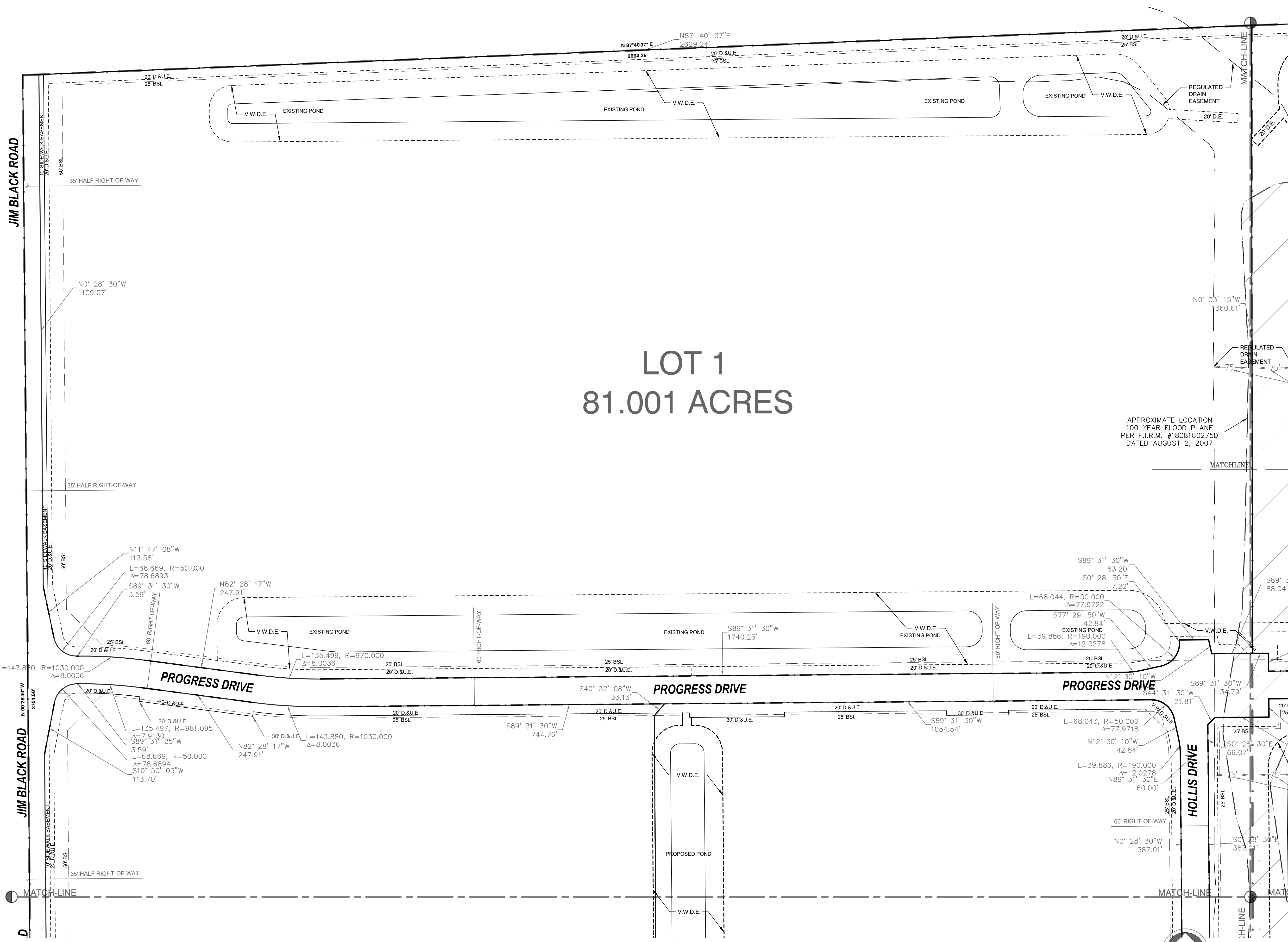
INFORMATION SHEET

SUNBEAM
11800 EXIT FIVE PARKWAY
FISHERS, INDIANA 46037

ORIGINAL ISSUE	6/30/2022
JOB NO.	220001
DRAWN BY:	AMM
CHECKED BY:	MLM
REVISIONS	

SHEET NO.
I-1

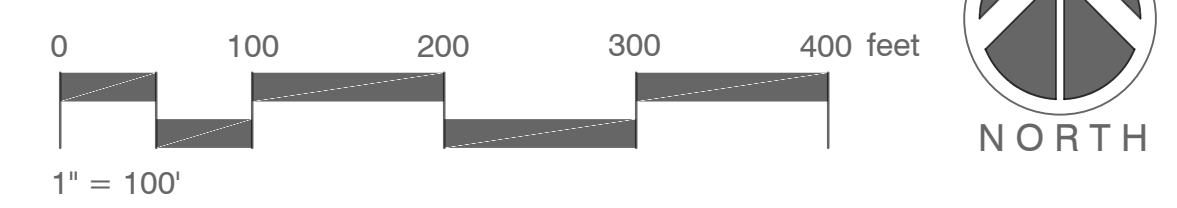
FILE PATH: C:\Studio A Projects\220001 I-65 South Commerce Park Building 2&3.dwg PRIMARY PLAT MODIFIED SEPT 2023 cover.dwg PLOT SCALE: 1:2,5649 PLOT DATE: 11/21/2023 2:18:08 PM PLOTTED BY: ANMMO



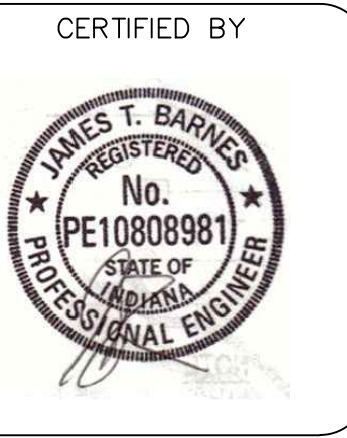
LOT 1 81.001 ACRES

- LEGEND**
- B.S.L. - BUILDING SETBACK LINE
 - D.&U.E. - DRAINAGE & UTILITY EASEMENT
 - S.D.&U.E. - SANITARY DRAINAGE & UTILITY EASEMENT
 - V.W.D.E. - VARIABLE WIDTH DRAINAGE EASEMENT
 - R.O.W. - RIGHT-OF-WAY
 - R.D.E. - REGULATED DRAINAGE EASEMENT
 - D.E. - DRAINAGE EASEMENT

- SYMBOL LEGEND**
- Beehive Inlet
 - Curb Inlet
 - Drainage Inlet
 - Drainage MH
 - Electric Box
 - Electric Meter Box
 - Fire Hydrant
 - Gas Marker
 - Ground Light
 - Hose Bib
 - Light Pole
 - Post
 - Right of Way Marker
 - Sanitary MH
 - Sign
 - Telephone Handhole
 - Telephone Marker
 - Telephone Pedestal
 - Transformer
 - Tree
 - Water Marker
 - Water Meter
 - Water Valve
 - Buried Electric Line
 - Buried Gas Line
 - Buried Water Line

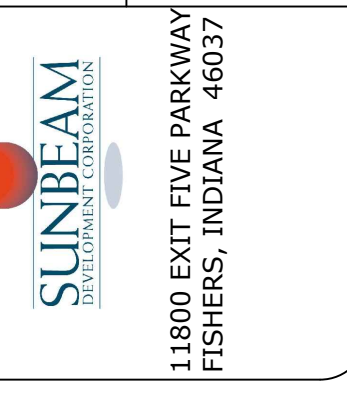


Studio A of Indianapolis
9511 East 96th Street
Indianapolis, IN 46256
(317) 585.0834
www.studioAindy.com



I-65 SOUTH COMMERCE PARK
CITY OF FRANKLIN, JOHNSON COUNTY, INDIANA

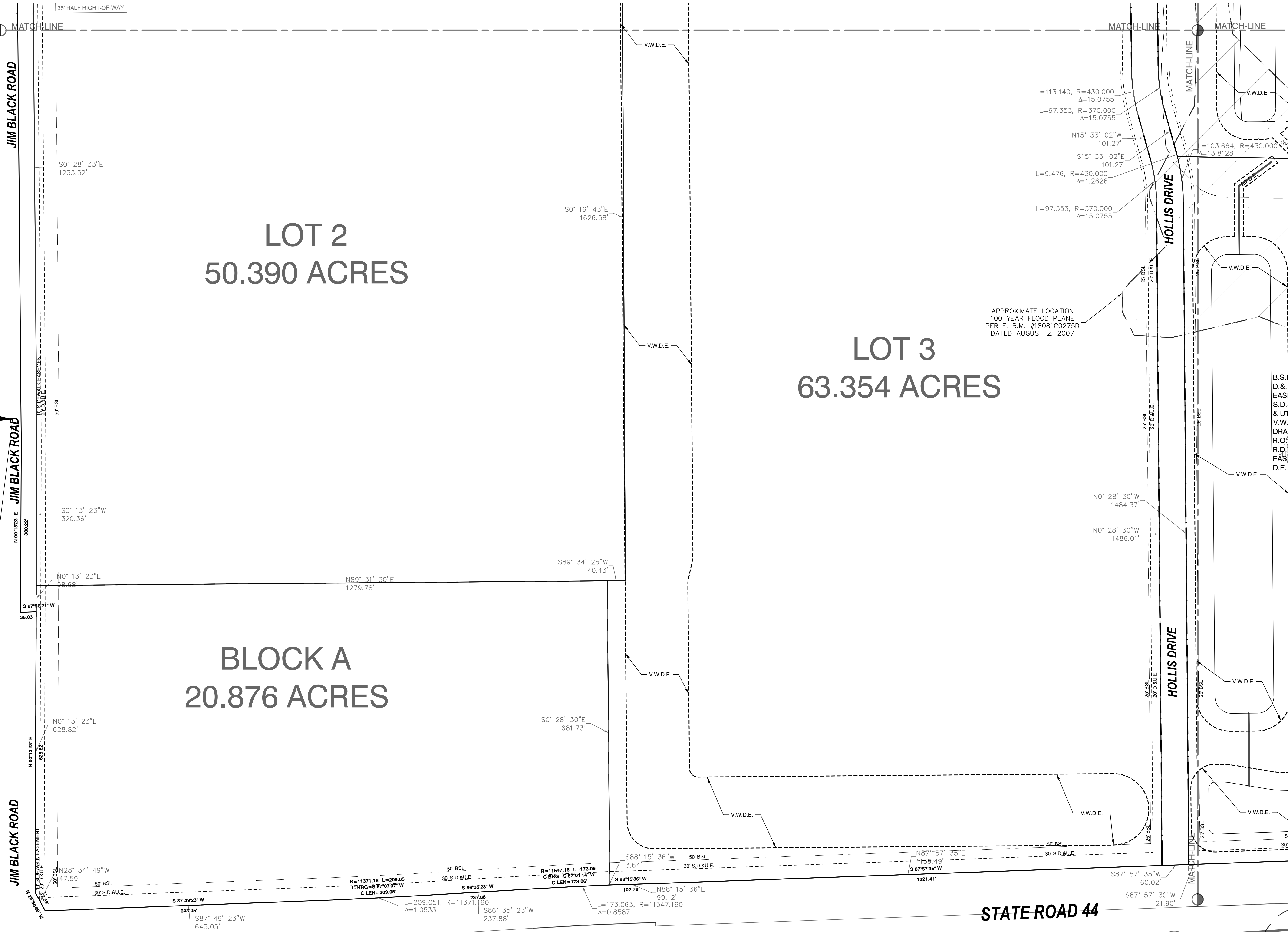
PRIMARY PLAT



ORIGINAL ISSUE	6/30/2022
JOB NO.	220001
DRAWN BY:	AMM
CHECKED BY:	MLM
REVISIONS	

"IT'S THE LAW"
811
Know what's Below
Call before you dig.
2 WORKING DAYS BEFORE YOU DIG.

SHEET NO.
PP-1



LOT 2
50.390 ACRES

LOT 3
63.354 ACRES

BLOCK A
20.876 ACRES

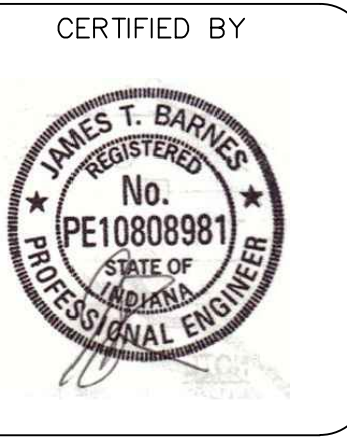
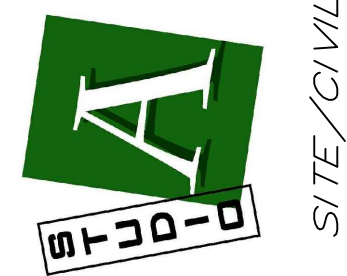
APPROXIMATE LOCATION
100 YEAR FLOOD PLANE
PER F.I.R.M. #18081C0275D
DATED AUGUST 2, 2007

L=113.140, R=430.000
Δ=15.0755
L=97.353, R=370.000
Δ=15.0755
N15° 33' 02"W
101.27'
S15° 33' 02"E
101.27'
L=9.476, R=430.000
Δ=1.2626
L=97.353, R=370.000
Δ=15.0755
L=103.664, R=430.000
Δ=13.8128

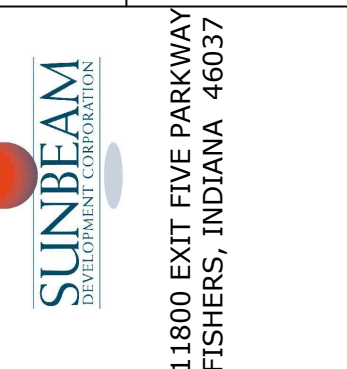
LEGEND
B.S.L. - BUILDING SETBACK LINE
D.&U.E. - DRAINAGE & UTILITY
EASEMENT
S.D.&U.E. - SANITARY DRAINAGE
& UTILITY EASEMENT
V.W.D.E. - VARIABLE WIDTH
DRAINAGE EASEMENT
R.O.W. - RIGHT -OF-WAY
R.D.E. - REGULATED DRAINAGE
EASEMENT
D.E. - DRAINAGE EASEMENT

SYMBOL LEGEND
Beehive Inlet
Curb Inlet
Drainage Inlet
Drainage MH
Electric Box
Electric Meter Box
Fire Hydrant
Gas Marker
Ground Light
Hose Bib
Light Pole
Post
Right of Way Marker
Sanitary MH
Sign
Telephone Handhole
Telephone Marker
Telephone Pedestal
Transformer
Tree
Water Marker
Water Meter
Water Valve
Buried Electric Line
Buried Gas Line
Buried Water Line

Studio A of Indianapolis
9511 East 96th Street
Indianapolis, IN 46256
(317) 585.0834
www.studioAindy.com



I-65 SOUTH COMMERCE PARK
CITY OF FRANKLIN, JOHNSON COUNTY, INDIANA



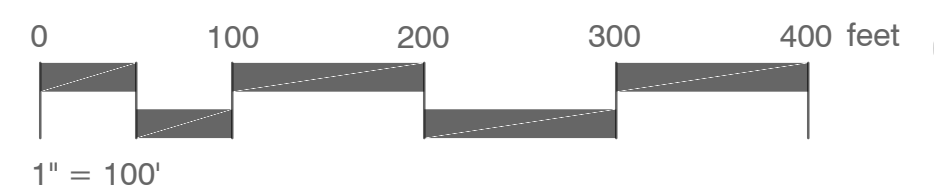
ORIGINAL ISSUE	6/30/2022
JOB NO.	220001
DRAWN BY:	AMM
CHECKED BY:	MLM
REVISIONS	

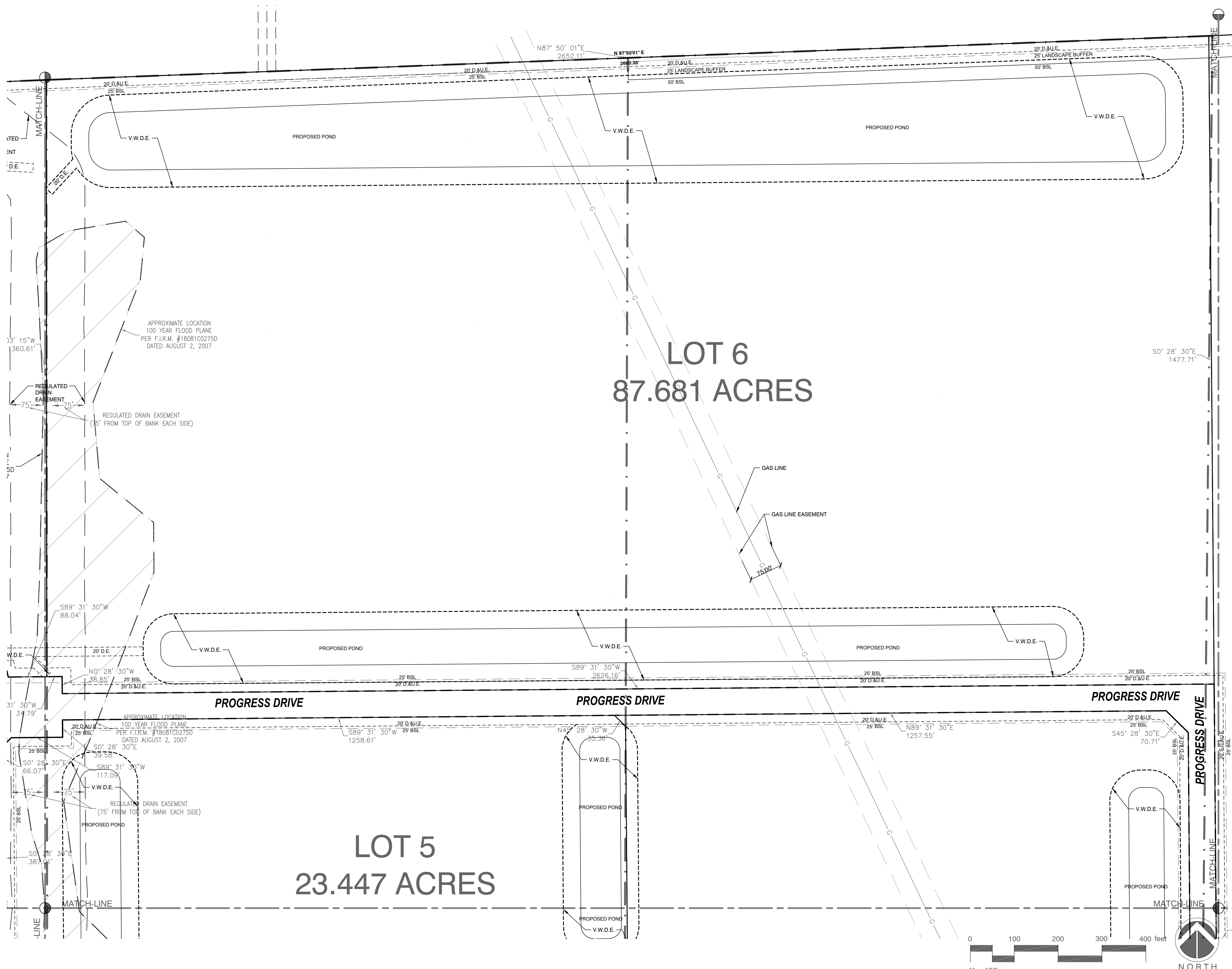
SHEET NO.
PP-2

STATE ROAD 44



Know what's Below
Call before you dig.
2 WORKING DAYS BEFORE YOU DIG.





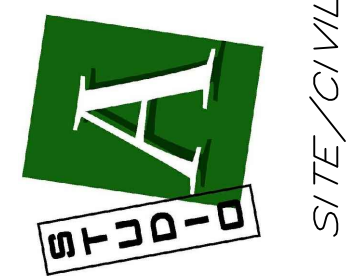
LOT 6
87.681 ACRES

LOT 5
23.447 ACRES

- LEGEND**
- B.S.L. - BUILDING SETBACK LINE
 - D.&U.E. - DRAINAGE & UTILITY EASEMENT
 - S.D. & U.E. - SANITARY DRAINAGE & UTILITY EASEMENT
 - V.W.D.E. - VARIABLE WIDTH DRAINAGE EASEMENT
 - R.O.W. - RIGHT-OF-WAY
 - R.D.E. - REGULATED DRAINAGE EASEMENT
 - D.E. - DRAINAGE EASEMENT

- SYMBOL LEGEND**
- ☐ Beehive Inlet
 - ☐ Curb Inlet
 - ⊙ Drainage Inlet
 - ⊙ Drainage MH
 - ⊙ Electric Box
 - ⊙ Electric Meter Box
 - ⊙ Fire Hydrant
 - ⊙ Gas Marker
 - ⊙ Ground Light
 - ⊙ Hose Bib
 - ⊙ Light Pole
 - ⊙ Post
 - ⊙ Right of Way Marker
 - ⊙ Sanitary MH
 - ⊙ Sign
 - ⊙ Telephone Handhole
 - ⊙ Telephone Marker
 - ⊙ Telephone Pedestal
 - ⊙ Transformer
 - ⊙ Tree
 - ⊙ Water Marker
 - ⊙ Water Meter
 - ⊙ Water Valve
 - - Buried Electric Line
 - - Buried Gas Line
 - - Buried Water Line

Studio A of Indianapolis
9511 East 96th Street
Indianapolis, IN 46256
(317) 585.0834
www.studioAindy.com



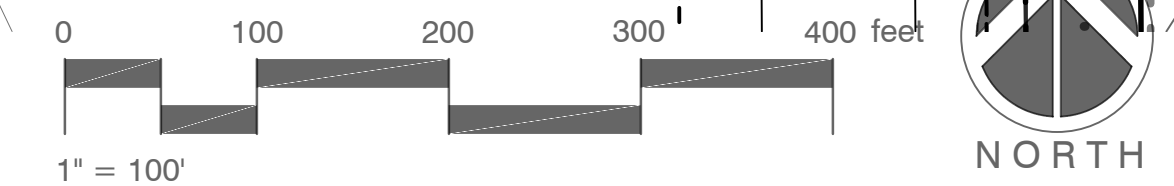
I-65 SOUTH COMMERCE PARK
CITY OF FRANKLIN, JOHNSON COUNTY, INDIANA



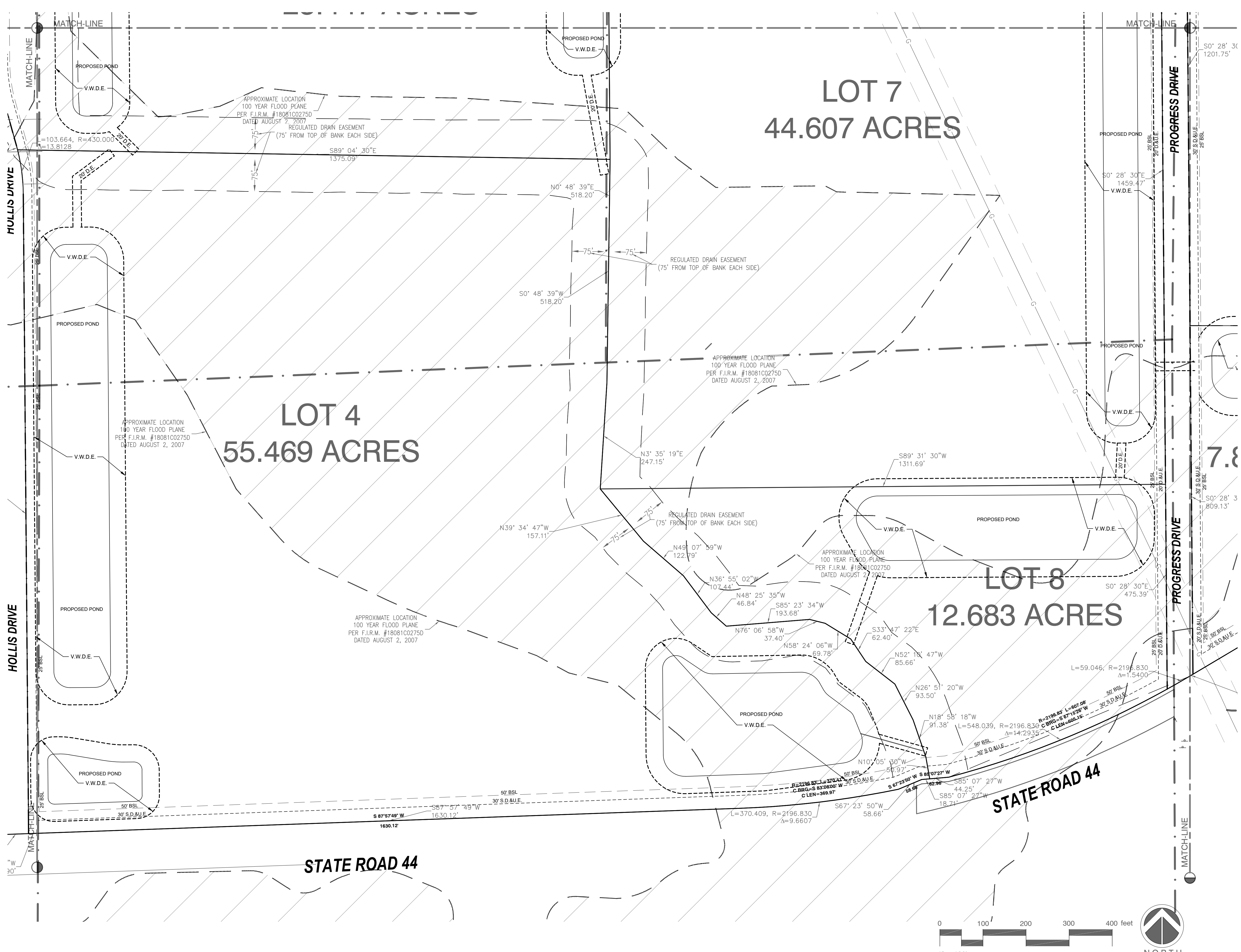
ORIGINAL ISSUE	6/30/2022
JOB NO.	220001
DRAWN BY:	AMM
CHECKED BY:	MLM
REVISIONS	



SHEET NO.
PP-3



FILE PATH: C:\Studio A Projects\220001 I-65 South Commerce Park Building 2&3.dwg PRIMARY PLAT MODIFIED SEPT 2023 cover.dwg PLOT SCALE: 1:2,584.9 PLOT DATE: 11/21/2023 2:21:45 PM PLOTTED BY: ANMMO



LEGEND
B.S.L. - BUILDING SETBACK LINE
D.&U.E. - DRAINAGE & UTILITY EASEMENT
S.D.&U.E. - SANITARY DRAINAGE & UTILITY EASEMENT
V.W.D.E. - VARIABLE WIDTH DRAINAGE EASEMENT
R.O.W. - RIGHT-OF-WAY
R.D.E. - REGULATED DRAINAGE EASEMENT
D.E. - DRAINAGE EASEMENT

SYMBOL LEGEND

- Beehive Inlet
- Curb Inlet
- Drainage Inlet
- Drainage MH
- Electric Box
- Electric Meter Box
- Fire Hydrant
- Gas Marker
- Ground Light
- Hose Bib
- Light Pole
- Post
- Right of Way Marker
- Sanitary MH
- Sign
- Telephone Handhole
- Telephone Marker
- Telephone Pedestal
- Transformer
- Tree
- Water Marker
- Water Meter
- Water Valve
- Buried Electric Line
- Buried Gas Line
- Buried Water Line

Studio A of Indianapolis
9511 East 96th Street
Indianapolis, IN 46256
(317) 585.0834
www.studioAindy.com

CERTIFIED BY

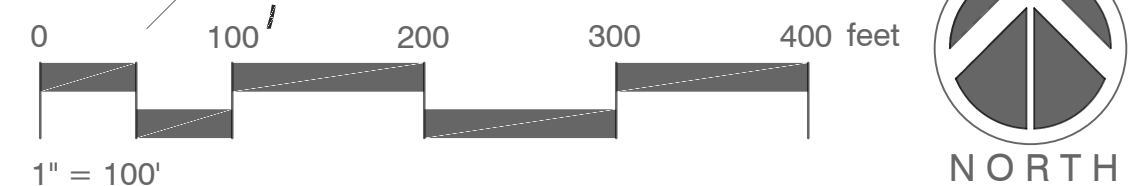
PRIMARY PLAT

I-65 SOUTH COMMERCE PARK
CITY OF FRANKLIN, JOHNSON COUNTY, INDIANA

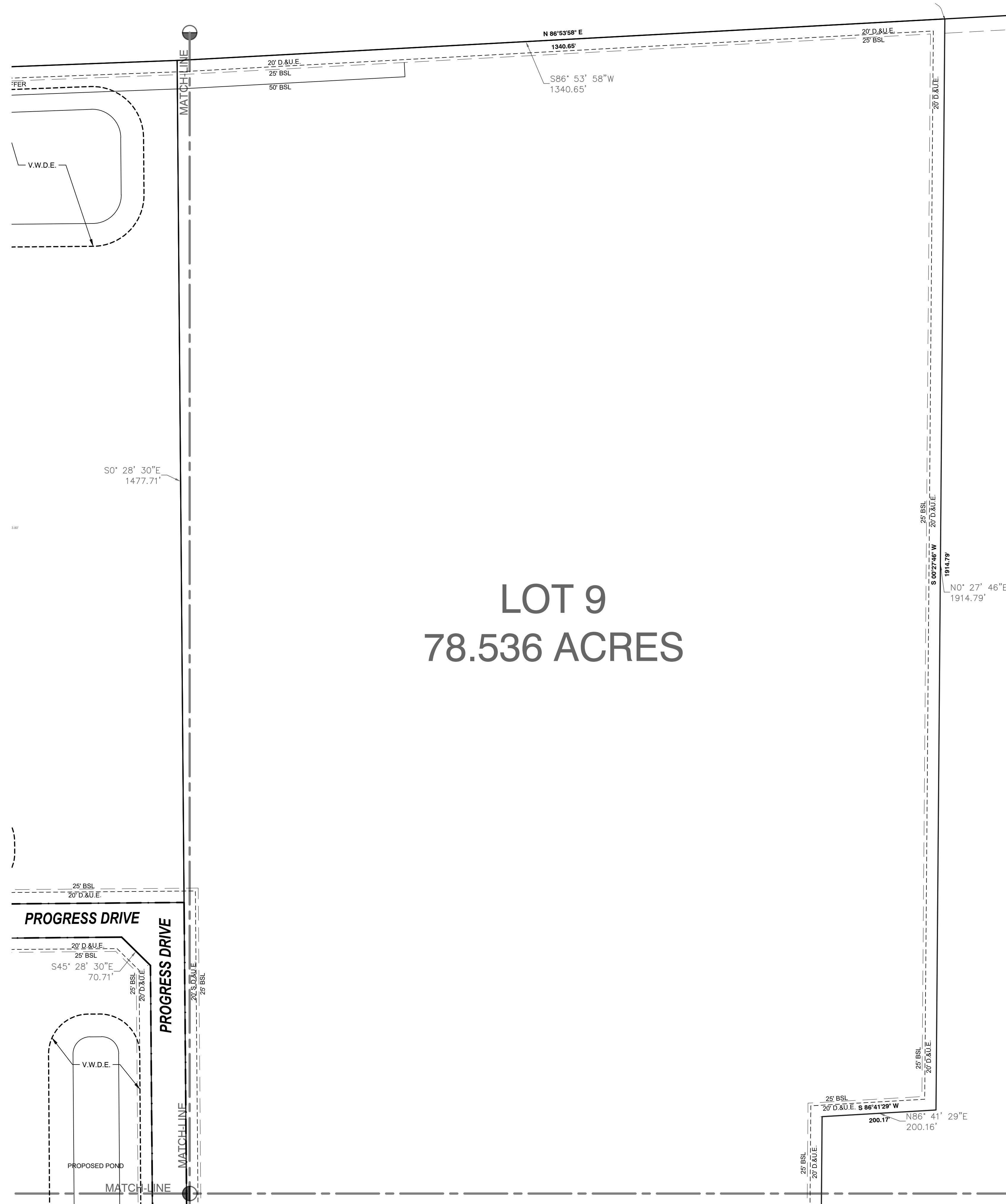
11800 EXIT FIVE PARKWAY
FISHERS, INDIANA 46037

ORIGINAL ISSUE	6/30/2022
JOB NO.	220001
DRAWN BY:	AMM
CHECKED BY:	MLM
REVISIONS	

SHEET NO.
PP-4



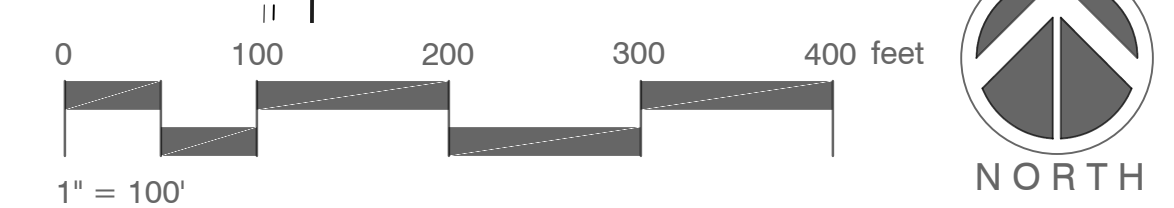
"IT'S THE LAW"
811
Know what's Below
Call before you dig.
2 WORKING DAYS BEFORE YOU DIG.



LOT 9
78.536 ACRES

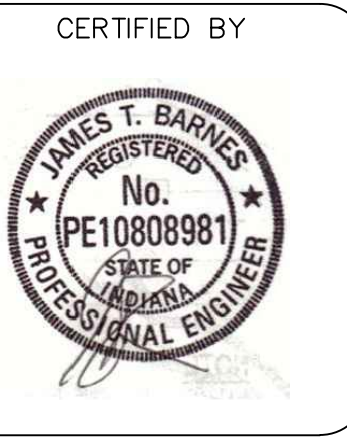
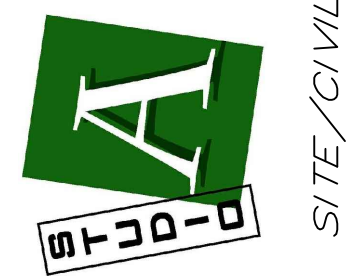
- LEGEND**
- B.S.L. - BUILDING SETBACK LINE
 - D.&U.E. - DRAINAGE & UTILITY EASEMENT
 - S.D. & U.E. - SANITARY DRAINAGE & UTILITY EASEMENT
 - V.W.D.E. - VARIABLE WIDTH DRAINAGE EASEMENT
 - R.O.W. - RIGHT-OF-WAY
 - R.D.E. - REGULATED DRAINAGE EASEMENT
 - D.E. - DRAINAGE EASEMENT

- SYMBOL LEGEND**
- ☐ Beehive Inlet
 - ☐ Curb Inlet
 - ⊕ Drainage Inlet
 - ⊕ Drainage MH
 - ⊕ Electric Box
 - ⊕ Electric Meter Box
 - ⊕ Fire Hydrant
 - ⊕ Gas Marker
 - ⊕ Ground Light
 - ⊕ Hose Bib
 - ⊕ Light Pole
 - ⊕ Post
 - ⊕ Right of Way Marker
 - ⊕ Sanitary MH
 - ⊕ Sign
 - ⊕ Telephone Handhole
 - ⊕ Telephone Marker
 - ⊕ Telephone Pedestal
 - ⊕ Transformer
 - ⊕ Tree
 - ⊕ Water Marker
 - ⊕ Water Meter
 - ⊕ Water Valve
 - e- Buried Electric Line
 - g- Buried Gas Line
 - w- Buried Water Line



"IT'S THE LAW"
811
Know what's Below
Call before you dig.
2 WORKING DAYS BEFORE YOU DIG.

Studio A of Indianapolis
9511 East 96th Street
Indianapolis, IN 46256
(317) 585.0834
www.studioAindy.com



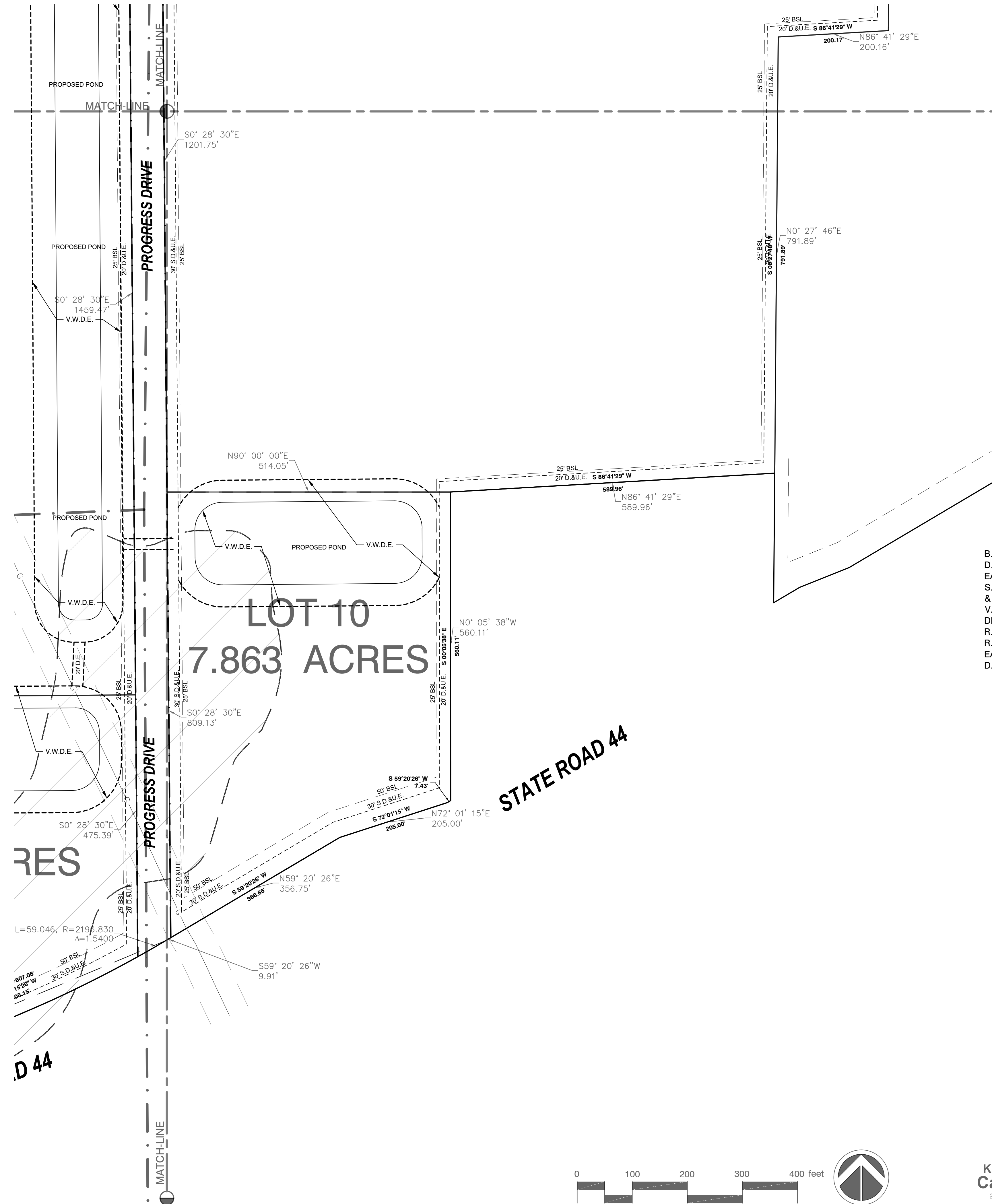
I-65 SOUTH COMMERCE PARK
CITY OF FRANKLIN, JOHNSON COUNTY, INDIANA

PRIMARY PLAT



ORIGINAL ISSUE	6/30/2022
JOB NO.	220001
DRAWN BY:	AMM
CHECKED BY:	MLM
REVISIONS	

SHEET NO.
PP-5

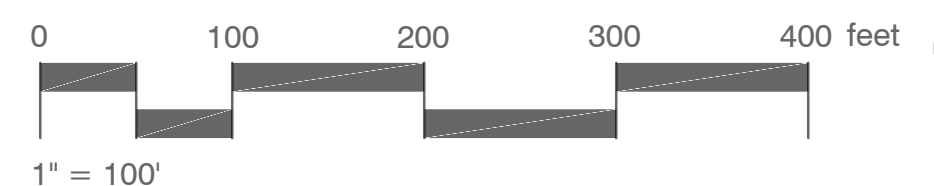


LEGEND

B.S.L.- BUILDING SETBACK LINE
 D.&U.E.- DRAINAGE & UTILITY EASEMENT
 S.D. & U.E.-SANITARY DRAINAGE & UTILITY EASEMENT
 V.W.D.E.- VARIABLE WIDTH DRAINAGE EASEMENT
 R.O.W. - RIGHT -OF-WAY
 R.D.E. - REGULATED DRAINAGE EASEMENT
 D.E. - DRAINAGE EASEMENT

SYMBOL LEGEND

- ☐ Beehive Inlet
- ☐ Curb Inlet
- ⊕ Drainage Inlet
- ⊕ Drainage MH
- ⊕ Electric Box
- ⊕ Electric Meter Box
- ⊕ Fire Hydrant
- ⊕ Gas Marker
- ⊕ Ground Light
- ⊕ Hose Bib
- ⊕ Light Pole
- ⊕ Post
- ⊕ Right of Way Marker
- ⊕ Sanitary MH
- ⊕ Sign
- ⊕ Telephone Handhole
- ⊕ Telephone Marker
- ⊕ Telephone Pedestal
- ⊕ Transformer
- ⊕ Tree
- ⊕ Water Marker
- ⊕ Water Meter
- ⊕ Water Valve
- e- Buried Electric Line
- g- Buried Gas Line
- w- Buried Water Line

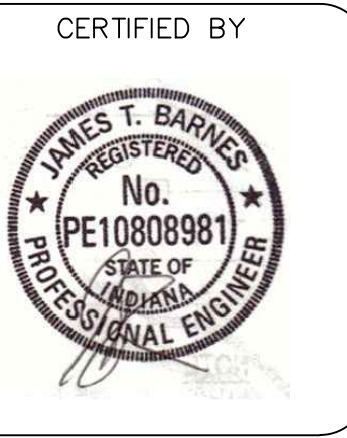


"IT'S THE LAW"

811

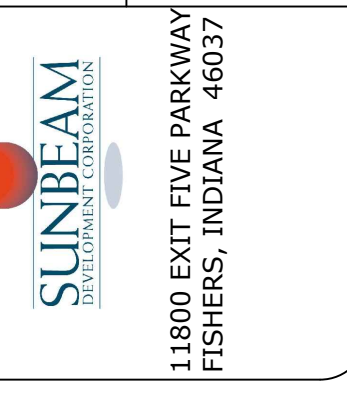
Know what's Below
 Call before you dig.
 2 WORKING DAYS BEFORE YOU DIG.

Studio A of Indianapolis
 9511 East 96th Street
 Indianapolis, IN 46256
 (317) 585.0834
 www.studioAindy.com



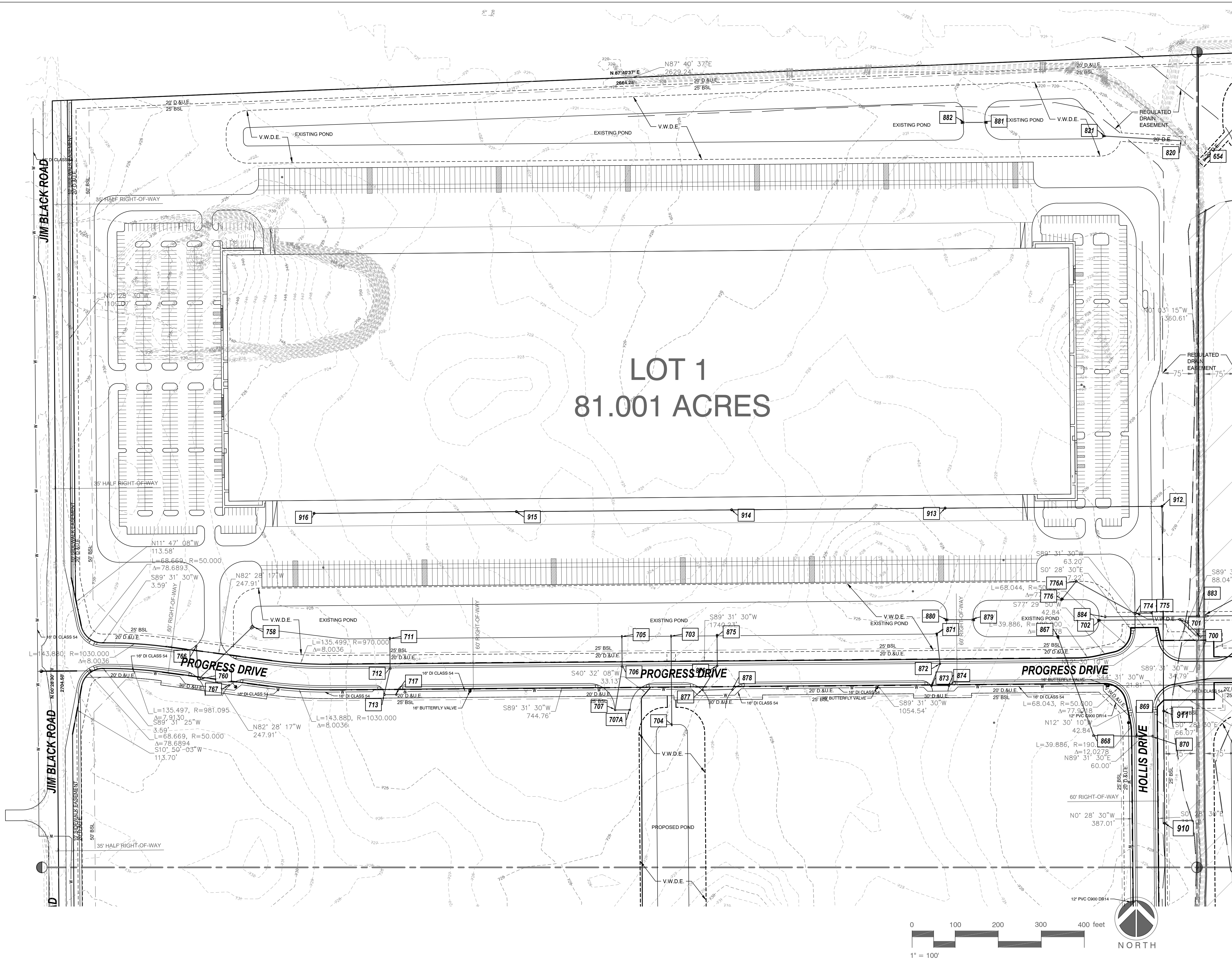
I-65 SOUTH COMMERCE PARK
 CITY OF FRANKLIN, JOHNSON COUNTY, INDIANA

PRIMARY PLAT



ORIGINAL ISSUE	6/30/2022
JOB NO.	220001
DRAWN BY:	AMM
CHECKED BY:	MLM
REVISIONS	

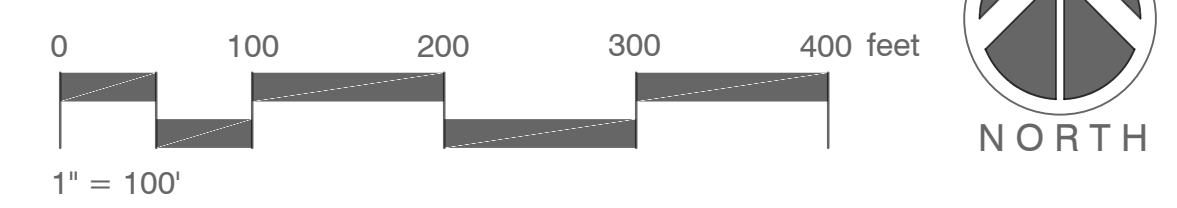
SHEET NO.
PP-6



LOT 1 81.001 ACRES

- LEGEND**
- B.S.L. - BUILDING SETBACK LINE
 - D.&U.E. - DRAINAGE & UTILITY EASEMENT
 - S.D.&U.E. - SANITARY DRAINAGE & UTILITY EASEMENT
 - V.W.D.E. - VARIABLE WIDTH DRAINAGE EASEMENT
 - R.O.W. - RIGHT-OF-WAY
 - R.D.E. - REGULATED DRAINAGE EASEMENT
 - D.E. - DRAINAGE EASEMENT

- SYMBOL LEGEND**
- Beehive Inlet
 - Curb Inlet
 - Drainage Inlet
 - Drainage MH
 - Electric Box
 - Electric Meter Box
 - Fire Hydrant
 - Gas Marker
 - Ground Light
 - Hose Bib
 - Light Pole
 - Post
 - Right of Way Marker
 - Sanitary MH
 - Sign
 - Telephone Handhole
 - Telephone Marker
 - Telephone Pedestal
 - Transformer
 - Tree
 - Water Marker
 - Water Meter
 - Water Valve
 - Buried Electric Line
 - Buried Gas Line
 - Buried Water Line



Studio A of Indianapolis
9511 East 96th Street
Indianapolis, IN 46256
(317) 585.0834
www.studioAindy.com



I-65 SOUTH COMMERCE PARK
CITY OF FRANKLIN, JOHNSON COUNTY, INDIANA

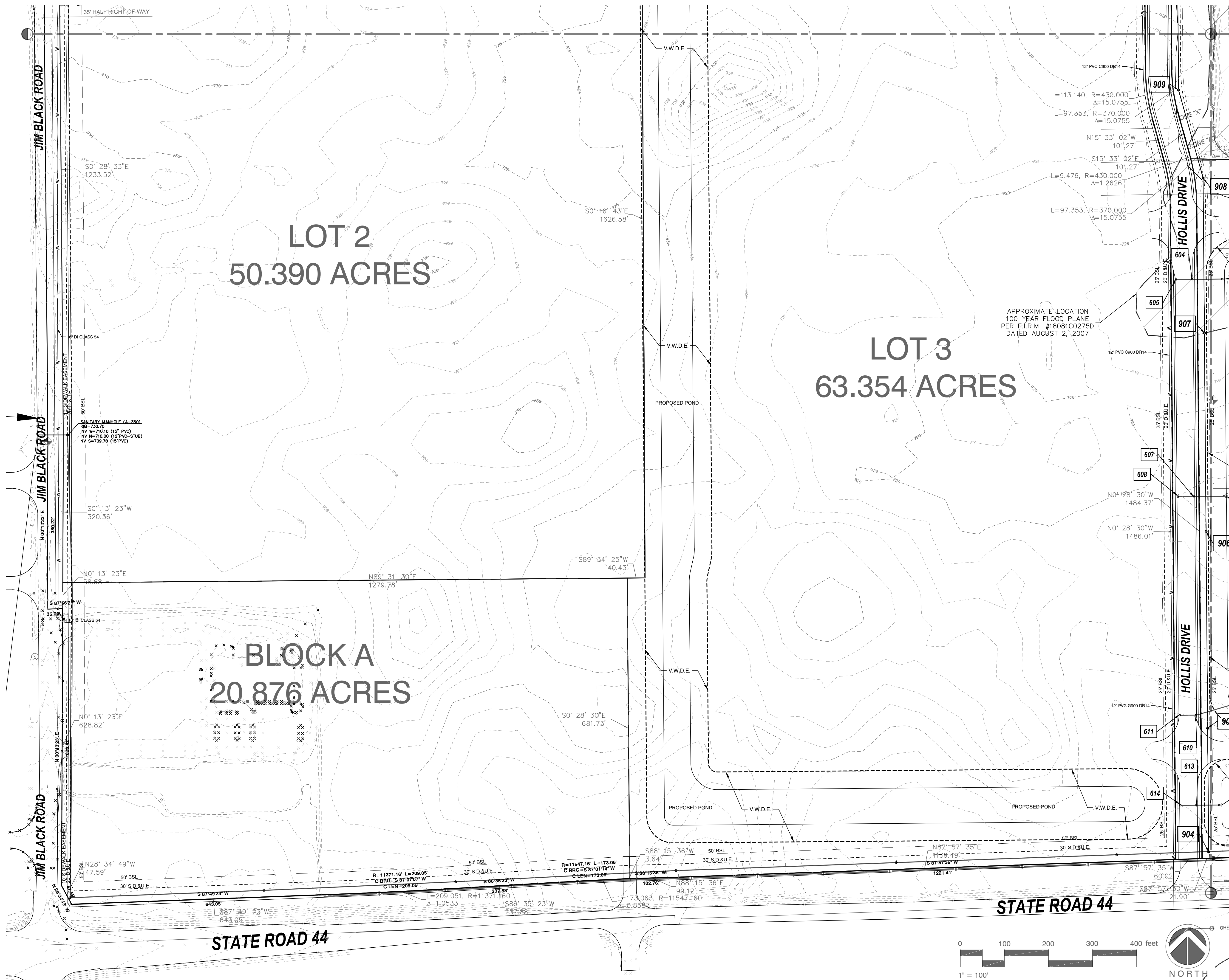
DEVELOPMENT PLAN



ORIGINAL ISSUE	6/30/2022
JOB NO.	220001
DRAWN BY:	AMM
CHECKED BY:	MLM
REVISIONS	

"IT'S THE LAW"
811
Know what's Below
Call before you dig.
2 WORKING DAYS BEFORE YOU DIG.

SHEET NO.
DP-1



Studio A of Indianapolis
9511 East 96th Street
Indianapolis, IN 46256
(317) 585.0834
www.studioAindy.com

SITE/CIVIL/LANDSCAPE ARCHITECTURE

CERTIFIED BY

I-65 SOUTH COMMERCE PARK
CITY OF FRANKLIN, JOHNSON COUNTY, INDIANA

DEVELOPMENT PLAN

11800 EXIT FIVE PARKWAY
FISHERS, INDIANA 46037

ORIGINAL ISSUE	6/30/2022
JOB NO.	220001
DRAWN BY:	AMM
CHECKED BY:	MLM
REVISIONS	

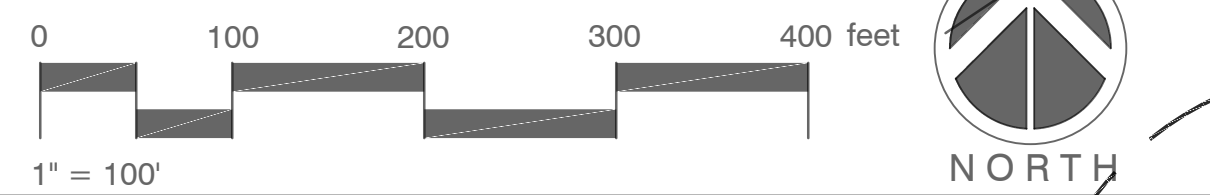
SHEET NO.
DP-2

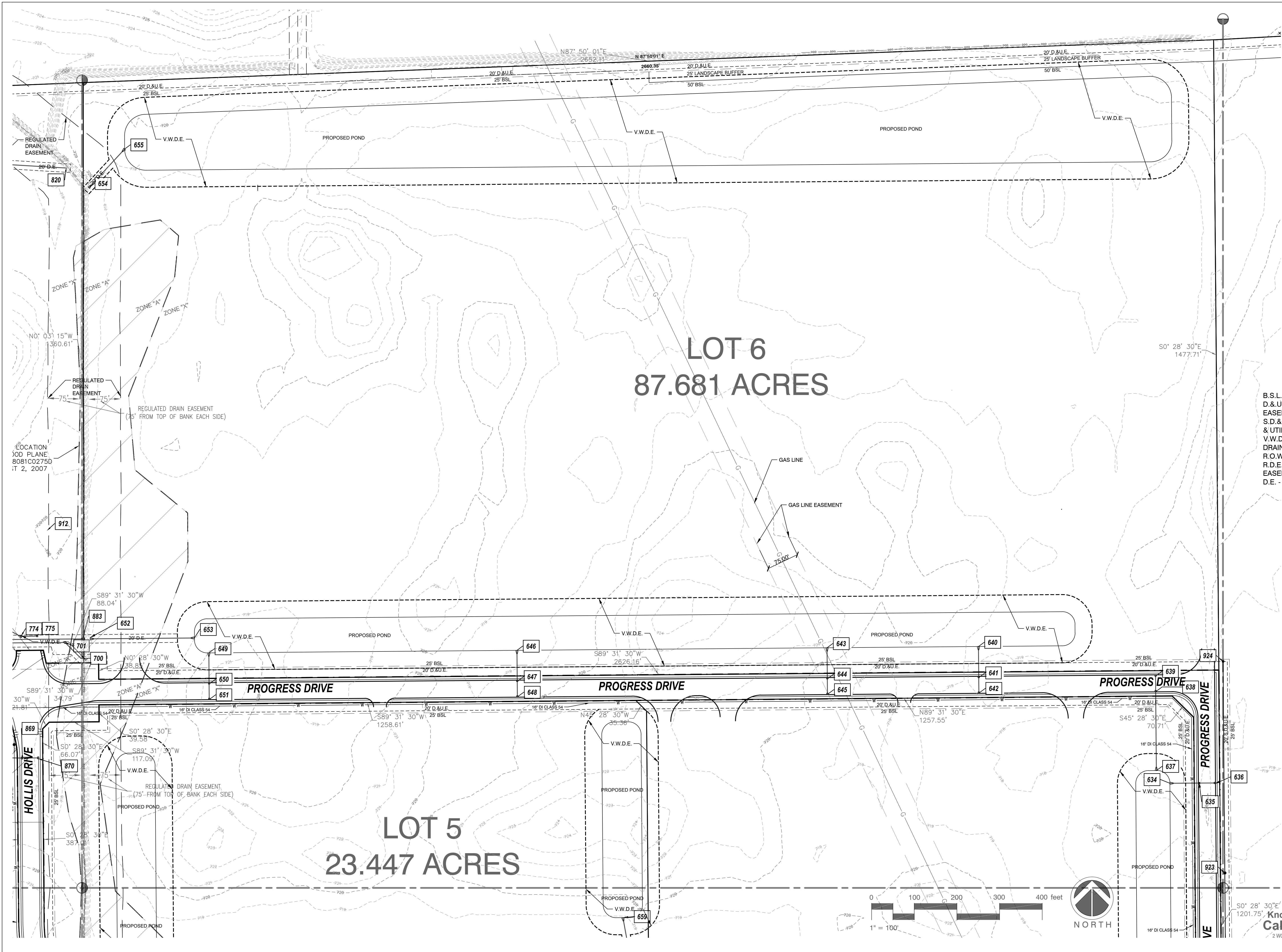
- LEGEND**
- B.S.L. - BUILDING SETBACK LINE
 - D.&U.E. - DRAINAGE & UTILITY EASEMENT
 - S.D.&U.E. - SANITARY DRAINAGE & UTILITY EASEMENT
 - V.W.D.E. - VARIABLE WIDTH DRAINAGE EASEMENT
 - R.O.W. - RIGHT-OF-WAY
 - R.D.E. - REGULATED DRAINAGE EASEMENT
 - D.E. - DRAINAGE EASEMENT

- SYMBOL LEGEND**
- Beehive Inlet
 - Curb Inlet
 - Drainage Inlet
 - Drainage MH
 - Electric Box
 - Electric Meter Box
 - Fire Hydrant
 - Gas Marker
 - Ground Light
 - Hose Bib
 - Light Pole
 - Post
 - Right of Way Marker
 - Sanitary MH
 - Sign
 - Telephone Handhole
 - Telephone Marker
 - Telephone Pedestal
 - Transformer
 - Tree
 - Water Marker
 - Water Meter
 - Water Valve
 - Buried Electric Line
 - Buried Gas Line
 - Buried Water Line

"IT'S THE LAW"

Know what's Below
Call before you dig.
2 WORKING DAYS BEFORE YOU DIG.



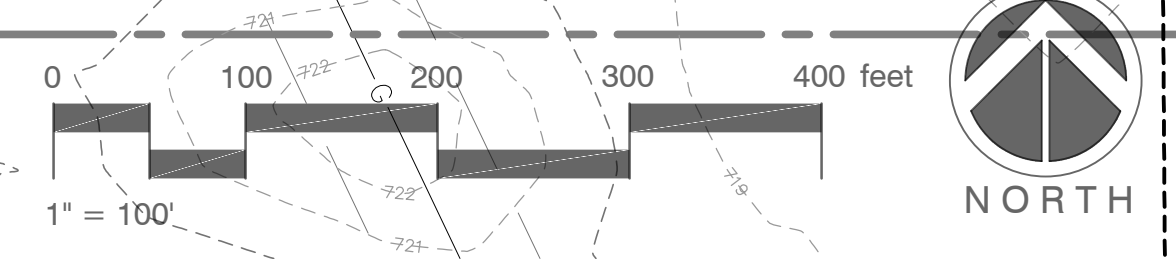


LOT 6
87.681 ACRES

LOT 5
23.447 ACRES

- LEGEND**
- B.S.L. - BUILDING SETBACK LINE
 - D.&U.E. - DRAINAGE & UTILITY EASEMENT
 - S.D. & U.E. - SANITARY DRAINAGE & UTILITY EASEMENT
 - V.W.D.E. - VARIABLE WIDTH DRAINAGE EASEMENT
 - R.O.W. - RIGHT-OF-WAY
 - R.D.E. - REGULATED DRAINAGE EASEMENT
 - D.E. - DRAINAGE EASEMENT

- SYMBOL LEGEND**
- Beehive Inlet
 - Curb Inlet
 - Drainage Inlet
 - Drainage MH
 - Electric Box
 - Electric Meter Box
 - Fire Hydrant
 - Gas Marker
 - Ground Light
 - Hose Bib
 - Light Pole
 - Post
 - Right of Way Marker
 - Sanitary MH
 - Sign
 - Telephone Handhole
 - Telephone Marker
 - Telephone Pedestal
 - Transformer
 - Tree
 - Water Marker
 - Water Meter
 - Water Valve
 - Buried Electric Line
 - Buried Gas Line
 - Buried Water Line



"IT'S THE LAW"

Know what's Below
Call before you dig.
2 WORKING DAYS BEFORE YOU DIG.

Studio A of Indianapolis
9511 East 96th Street
Indianapolis, IN 46256
(317) 585.0834
www.studioAindy.com

SITE/CIVIL/LANDSCAPE ARCHITECTURE

CERTIFIED BY

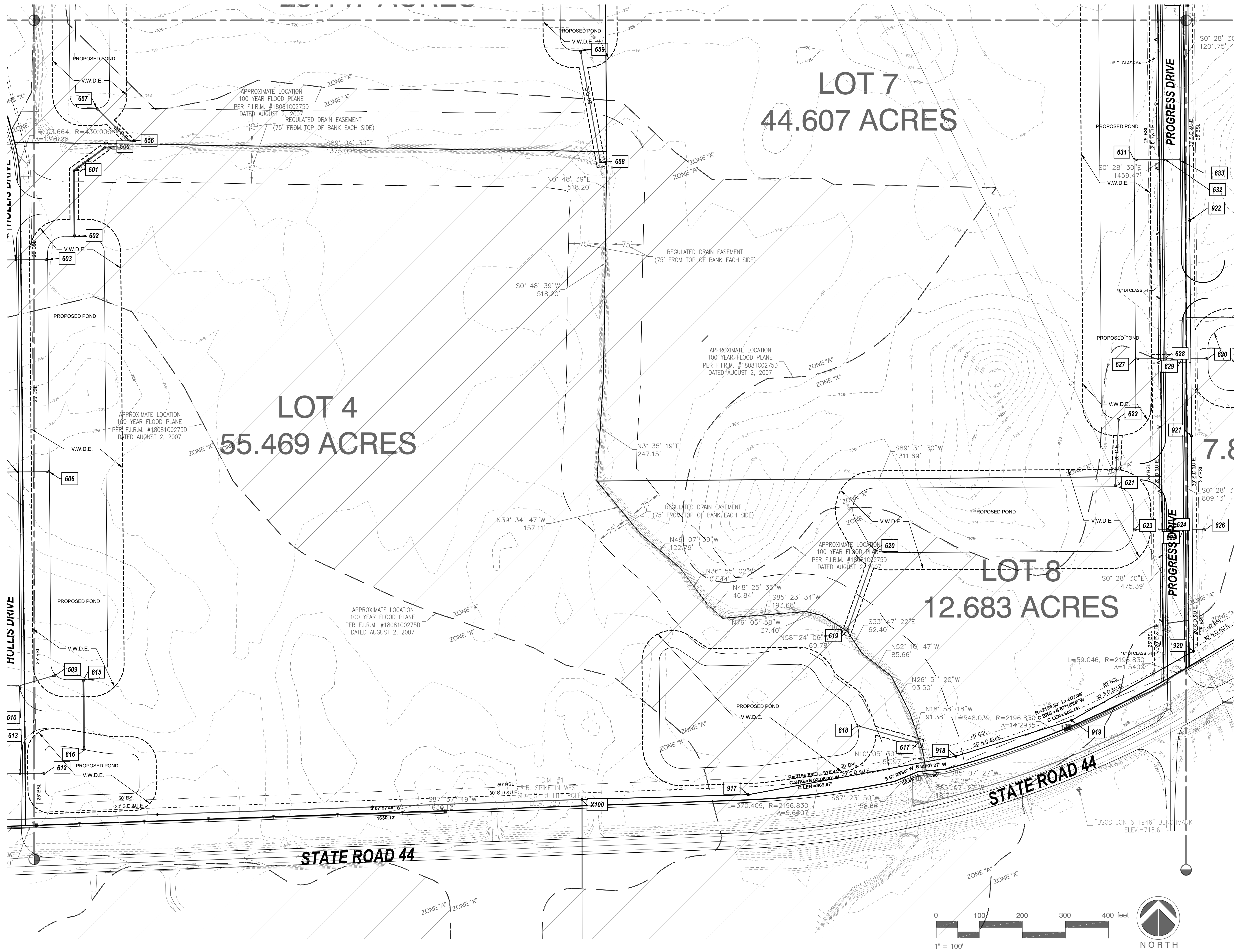
I-65 SOUTH COMMERCE PARK
CITY OF FRANKLIN, JOHNSON COUNTY, INDIANA

DEVELOPMENT PLAN

11800 EXIT FIVE PARKWAY
FISHERS, INDIANA 46037

ORIGINAL ISSUE	6/30/2022
JOB NO.	220001
DRAWN BY:	AMM
CHECKED BY:	MLM
REVISIONS	

SHEET NO.
DP-3



LEGEND

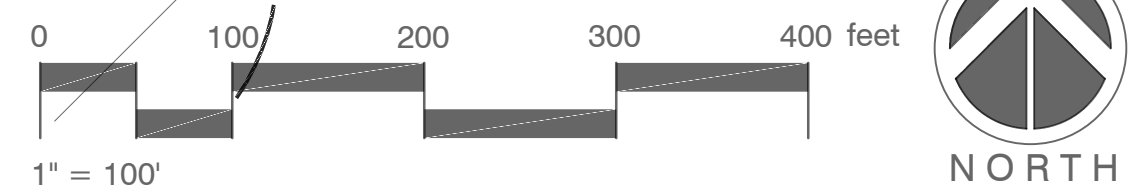
B.S.L. - BUILDING SETBACK LINE
 D.&U.E. - DRAINAGE & UTILITY EASEMENT
 S.D.&U.E. - SANITARY DRAINAGE & UTILITY EASEMENT
 V.W.D.E. - VARIABLE WIDTH DRAINAGE EASEMENT
 R.O.W. - RIGHT-OF-WAY
 R.D.E. - REGULATED DRAINAGE EASEMENT
 D.E. - DRAINAGE EASEMENT

SYMBOL LEGEND

- ⊠ Beehive Inlet
- ⊞ Curb Inlet
- ⊕ Drainage Inlet
- ⊗ Drainage MH
- ⊠ Electric Box
- ⊞ Electric Meter Box
- ⊕ Fire Hydrant
- ⊗ Gas Marker
- ⊠ Ground Light
- ⊞ Hose Bib
- ⊕ Light Pole
- ⊗ Post
- ⊠ Right of Way Marker
- ⊞ Sanitary MH
- ⊕ Sign
- ⊗ Telephone Handhole
- ⊠ Telephone Marker
- ⊞ Telephone Pedestal
- ⊕ Transformer
- ⊗ Tree
- ⊠ Water Marker
- ⊞ Water Meter
- ⊕ Water Valve
- ⊗ Buried Electric Line
- ⊠ Buried Gas Line
- ⊞ Buried Water Line

"IT'S THE LAW"

Know what's Below
 Call before you dig.
 2 WORKING DAYS BEFORE YOU DIG.



Studio A of Indianapolis
 9511 East 96th Street
 Indianapolis, IN 46256
 (317) 585.0834
 www.studioAindy.com

SITE/CIVIL/LANDSCAPE ARCHITECTURE

CERTIFIED BY

I-65 SOUTH COMMERCE PARK
 CITY OF FRANKLIN, JOHNSON COUNTY, INDIANA

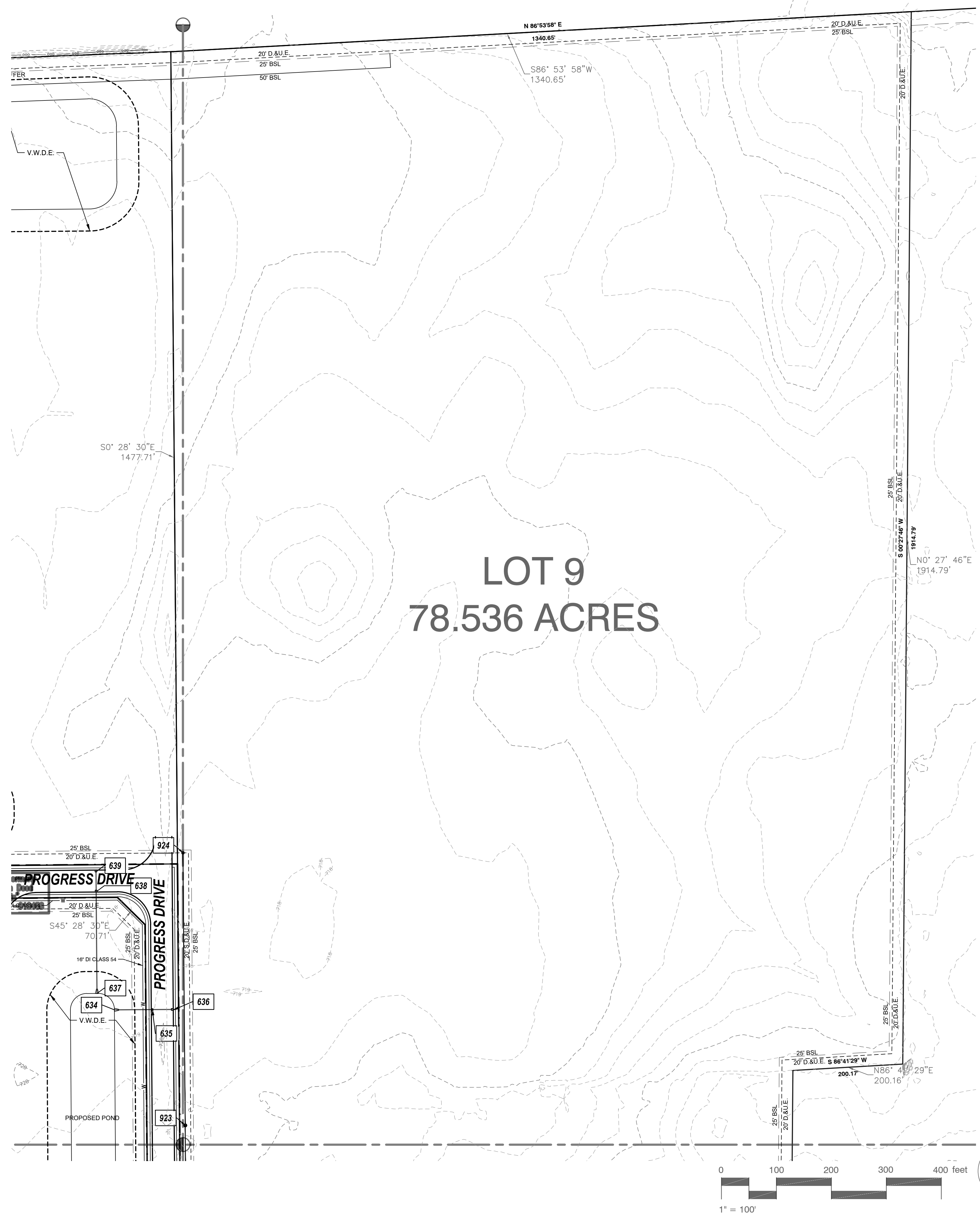
DEVELOPMENT PLAN

11800 EXIT FIVE PARKWAY
 FISHERS, INDIANA 46037

ORIGINAL ISSUE	6/30/2022
JOB NO.	220001
DRAWN BY:	AMM
CHECKED BY:	MLM
REVISIONS	

SHEET NO.
DP-4

FILE PATH: C:\Studio A Projects\220001 I-65 South Commerce Park Building 2&3.dwg PRIMARY PLAT MODIFIED SEPT 2023 cover.dwg PLOT SCALE: 1:2,5649 PLOT DATE: 11/21/2023 2:31:25 PM PLOTTED BY: ANMMO



LOT 9
78.536 ACRES

LEGEND

- B.S.L. - BUILDING SETBACK LINE
- D.&U.E. - DRAINAGE & UTILITY EASEMENT
- S.D. & U.E. - SANITARY DRAINAGE & UTILITY EASEMENT
- V.W.D.E. - VARIABLE WIDTH DRAINAGE EASEMENT
- R.O.W. - RIGHT-OF-WAY
- R.D.E. - REGULATED DRAINAGE EASEMENT
- D.E. - DRAINAGE EASEMENT

SYMBOL LEGEND

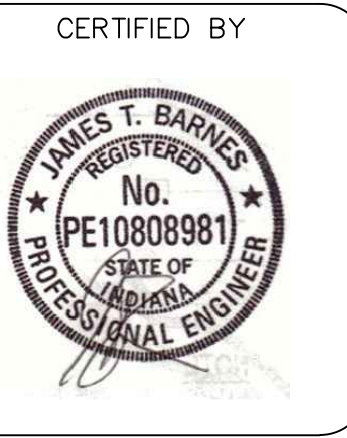
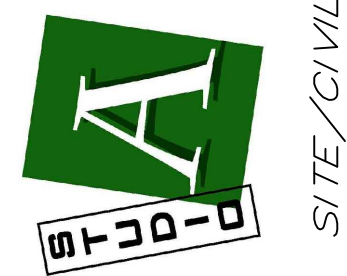
- Beehive Inlet
- Curb Inlet
- Drainage Inlet
- Drainage MH
- Electric Box
- Electric Meter Box
- Fire Hydrant
- Gas Marker
- Ground Light
- Hose Bib
- Light Pole
- Post
- Right of Way Marker
- Sanitary MH
- Sign
- Telephone Handhole
- Telephone Marker
- Telephone Pedestal
- Transformer
- Tree
- Water Marker
- Water Meter
- Water Valve
- Buried Electric Line
- Buried Gas Line
- Buried Water Line

"IT'S THE LAW"



Know what's Below
Call before you dig.
2 WORKING DAYS BEFORE YOU DIG.

Studio A of Indianapolis
9511 East 96th Street
Indianapolis, IN 46256
(317) 585.0834
www.studioAindy.com



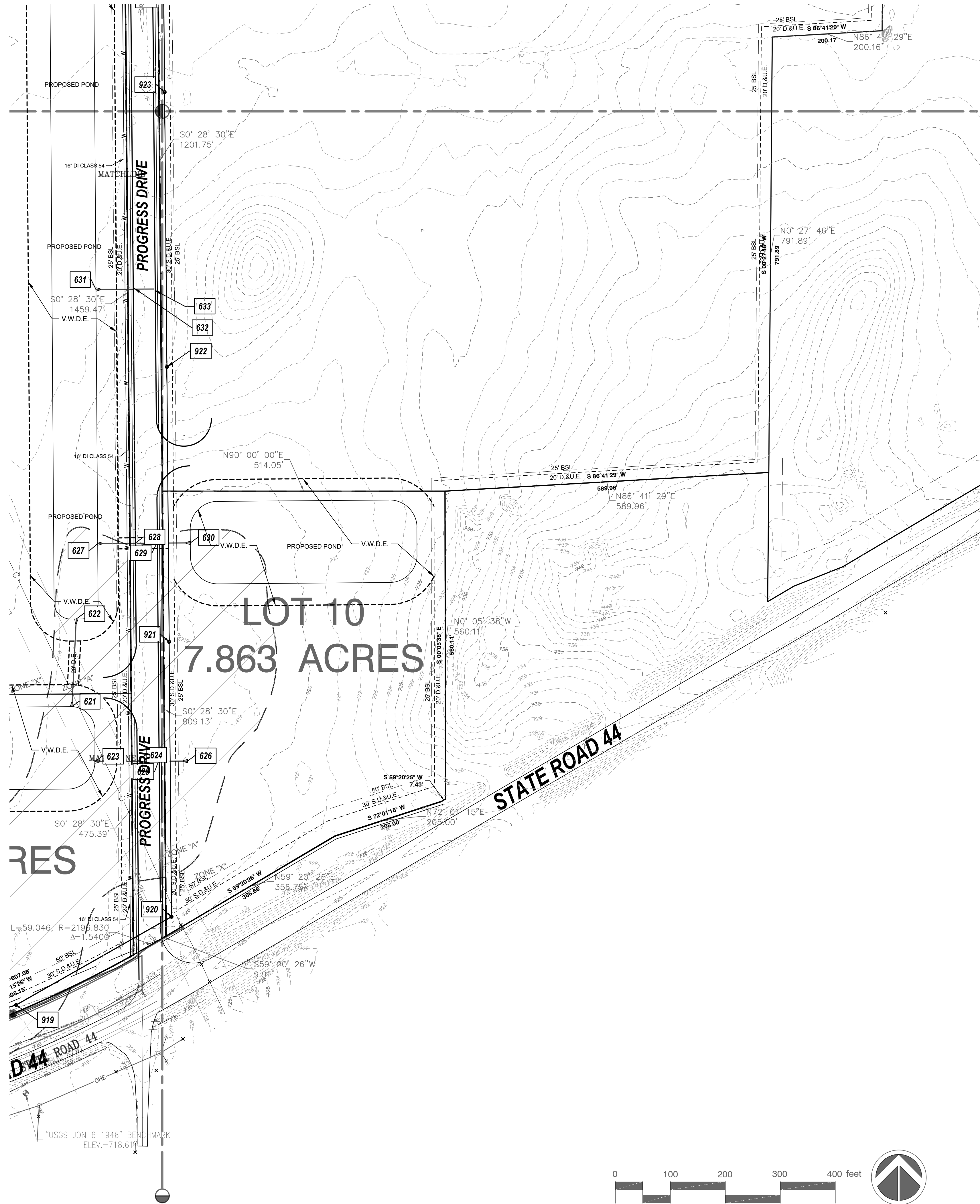
I-65 SOUTH COMMERCE PARK
CITY OF FRANKLIN, JOHNSON COUNTY, INDIANA

DEVELOPMENT PLAN



ORIGINAL ISSUE	6/30/2022
JOB NO.	220001
DRAWN BY:	AMM
CHECKED BY:	MLM
REVISIONS	

SHEET NO.
DP-5



LEGEND

- B.S.L. - BUILDING SETBACK LINE
- D.&U.E. - DRAINAGE & UTILITY EASEMENT
- S.D.&U.E. - SANITARY DRAINAGE & UTILITY EASEMENT
- V.W.D.E. - VARIABLE WIDTH DRAINAGE EASEMENT
- R.O.W. - RIGHT-OF-WAY
- R.D.E. - REGULATED DRAINAGE EASEMENT
- D.E. - DRAINAGE EASEMENT

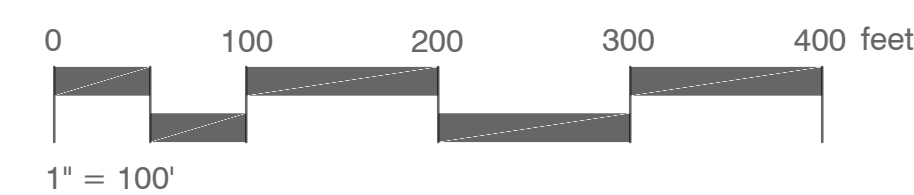
SYMBOL LEGEND

- Beehive Inlet
- Curb Inlet
- Drainage Inlet
- Drainage MH
- Electric Box
- Electric Meter Box
- Fire Hydrant
- Gas Marker
- Ground Light
- Hose Bib
- Light Pole
- Post
- Right of Way Marker
- Sanitary MH
- Sign
- Telephone Handhole
- Telephone Marker
- Telephone Pedestal
- Transformer
- Tree
- Water Marker
- Water Meter
- Water Valve
- Buried Electric Line
- Buried Gas Line
- Buried Water Line

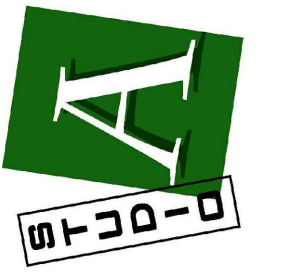
"IT'S THE LAW"



Know what's Below
Call before you dig.
2 WORKING DAYS BEFORE YOU DIG.

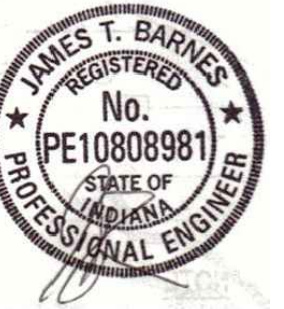


Studio A of Indianapolis
9511 East 96th Street
Indianapolis, IN 46256
(317) 585.0834
www.studioAindy.com



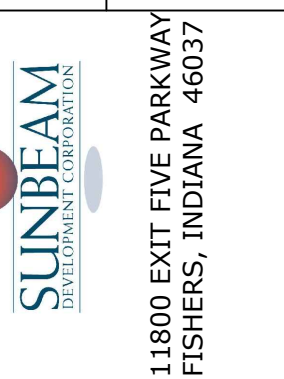
SITE/CIVIL/LANDSCAPE ARCHITECTURE

CERTIFIED BY



I-65 SOUTH COMMERCE PARK
CITY OF FRANKLIN, JOHNSON COUNTY, INDIANA

DEVELOPMENT PLAN

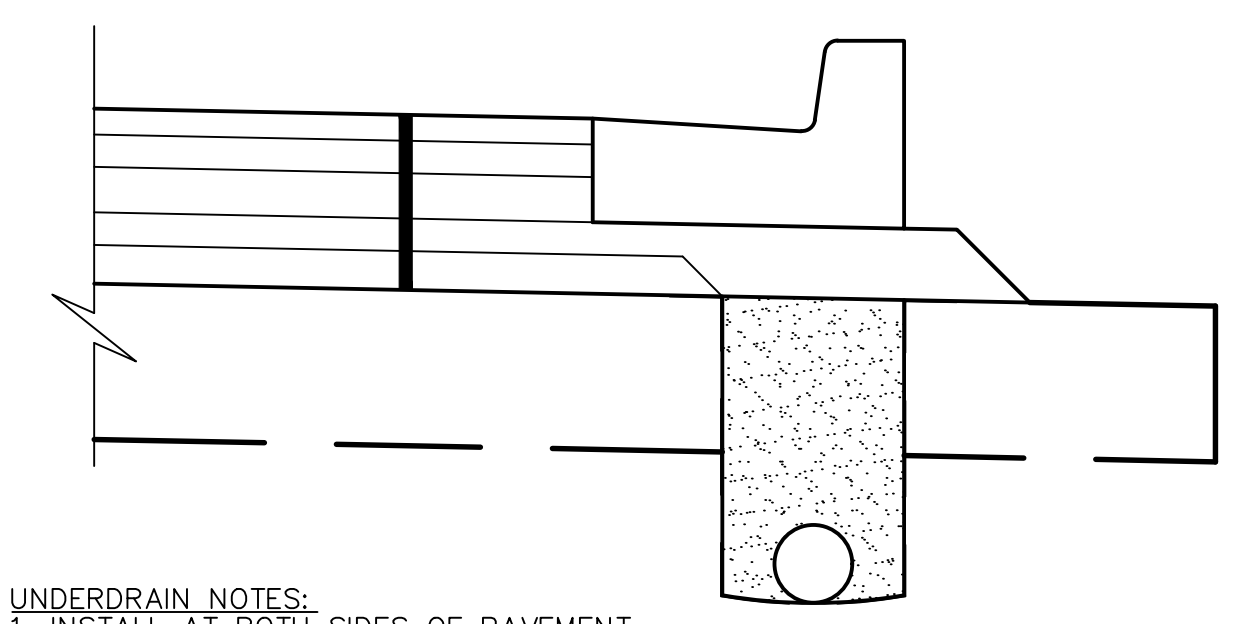


11800 EXIT FIVE PARKWAY
FISHERS, INDIANA 46037

ORIGINAL ISSUE	6/30/2022
JOB NO.	220001
DRAWN BY:	AMM
CHECKED BY:	MLM
REVISIONS	

SHEET NO.

DP-6

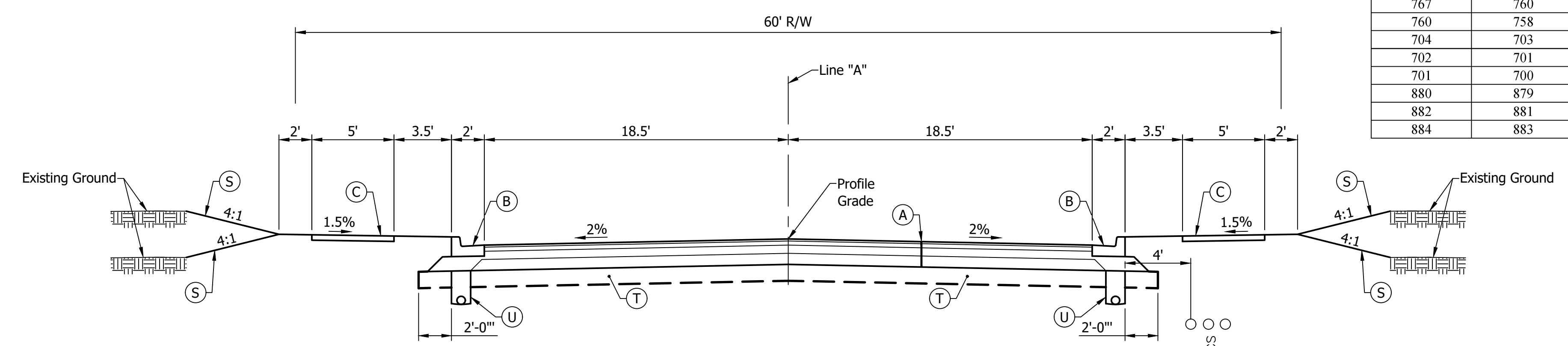


- UNDERDRAIN NOTES:**
1. INSTALL AT BOTH SIDES OF PAVEMENT RUNNING THE ENTIRE LENGTH OF ALL STREETS AND AROUND EACH CUL-DE-SAC.
 2. UNDERDRAIN GRADES SHALL NOT BE LESS THAN 0.30% AND THE PIPE SHALL BE DISCHARGED INTO STORM STRUCTURES OR OTHER APPROVED LOCATIONS
 3. IF UNDERDRAIN DISCHARGES INTO STORM STRUCTURE, THE UNDERDRAIN INLET INVERT SHALL BE 6" ABOVE THE OUTLET PIPES INVERT.
 4. ALL MATERIAL (AGGREGATE, UNDERDRAIN, GEOTEXTILES, ETC) SHALL MEET INDOT STANDARD SPECIFICATIONS.
 5. FOR ADDITIONAL INSTALLATION PROCEDURES, SEE INDOT STANDARD SPECIFICATIONS

**TYPICAL PIPE UNDERDRAIN
DETAIL
(NOT TO SCALE)**

PIPE DATA TABLE						
UPSTREAM STRUCTURE NO.	DOWNSTREAM STRUCTURE NO.	L.F.	SIZE/TYPE	SLOPE %	UPSTREAM INV.	DOWNSTREAM INV.
601	600	91	18" RCP	0.50	716.46	716.00
602	601	153	18" RCP	0.50	717.23	716.46
604	603	72	15" RCP	0.83	717.83	717.23
605	604	34	12" RCP	0.50	718.00	717.83
607	606	72	15" RCP	0.83	717.83	717.23
608	607	34	12" RCP	0.50	718.00	717.83
610	609	87	15" RCP	0.69	717.83	717.23
611	610	34	12" RCP	0.50	718.00	717.83
613	612	57	15" RCP	1.37	718.83	718.05
614	613	34	12" RCP	0.50	719.00	718.83
616	615	163	18" RCP	0.50	718.05	717.23
618	617	149	18" RCP	1.00	716.49	715.00
620	619	200	18" RCP	1.00	716.50	715.50
622	621	160	18" RCP	1.00	717.30	716.50
624	623	78	24" RCP	0.30	716.73	716.50
625	624	34	24" RCP	0.30	716.83	716.73
626	625	52	24" RCP	0.30	716.99	716.83
628	627	69	24" RCP	1.00	717.51	717.30
629	628	34	24" RCP	1.00	717.61	717.51
630	629	61	24" RCP	1.00	717.79	717.61
632	631	68	15" RCP	1.51	718.33	717.30
633	632	34	12" RCP	0.50	718.50	718.33
635	634	68	15" RCP	1.51	718.33	717.30
636	635	34	12" RCP	0.50	718.50	718.33
638	637	185	15" RCP	0.56	718.33	717.30
639	638	34	12" RCP	0.50	718.50	718.33
641	640	70	15" RCP	1.56	717.83	716.74
642	641	34	12" RCP	0.50	718.00	717.83
644	643	70	15" RCP	1.56	717.83	716.74
645	644	34	12" RCP	0.50	718.00	717.83
647	646	70	15" RCP	1.56	717.83	716.74
648	647	34	12" RCP	0.50	718.00	717.83
650	649	70	15" RCP	1.56	717.83	716.74
651	650	34	12" RCP	0.50	718.00	717.83
653	652	245	18" RCP	0.30	716.74	716.00
655	654	124	18" RCP	0.50	717.12	716.50
657	656	108	18" RCP	0.50	716.54	716.00
659	658	265	18" RCP	0.50	717.33	716.00
775	774	36	12" RCP	1.00	717.31	716.95
774	776A	153	15" RCP	0.60	716.95	716.03
776A	776	52	24" RCP	0.64	716.03	715.07
821	820	179	12" RCP	0.22	715.90	715.50
866	860	78	12" RCP	1.82	718.56	717.14
878	877	68	12" RCP	0.50	717.34	717.00
877	876	63	12" RCP	1.20	717.00	716.24
876	875	68	15" RCP	0.80	716.24	715.70
874	873	39	12" RCP	0.20	718.50	718.42
873	872	53	12" RCP	0.59	718.42	718.11
872	871	68	15" RCP	0.60	716.11	715.70
870	869	36	12" RCP	0.50	717.60	717.42
869	868	96	18" RCP	0.30	717.42	717.13
868	867	243	24" RCP	0.60	717.13	715.67
706	705	68	24" RCP	0.50	716.04	715.70
707	706	100	24" RCP	0.40	716.44	716.04
707A	707	32	12" RCP	0.50	718.10	717.94
712	711	68	18" RCP	1.40	716.65	715.70
713	712	60	18" RCP	1.20	720.57	719.85
717	713	26	12" RCP	1.00	721.83	721.57
767	760	67	12" RCP	1.00	724.92	724.25
760	758	173	48" RCP	0.32	716.25	715.70
704	703	204	24" RCP	0.15	716.00	715.70
702	701	185	36" RCP	0.25	715.60	715.14
701	700	52	36" RCP	0.25	715.14	715.00
880	879	50	36" RCP	0.20	715.70	715.60
882	881	40	12" RCP	0.25	716.00	715.90
884	883	215	30" RCP	0.94	717.09	715.07

STRUCTURE DATA TABLE				
STRUCTURE NO.	RIM	CASTING DESIGNATION	STRUCTURE TYPE	STORM NOTES
600	-	-	18" END SECTION	
601	-	R-1772	MH TYPE 'C'	
602	-	-	18" END SECTION	
603	-	-	15" END SECTION	
604	722.00	R-3287-15	INLET TYPE 'B'	
605	722.00	R-3287-15	MH TYPE 'C'	
606	-	-	15" END SECTION	
607	722.00	R-3287-15	INLET TYPE 'B'	
608	722.00	R-3287-15	MH TYPE 'C'	
609	-	-	15" END SECTION	
610	722.00	R-3287-15	INLET TYPE 'B'	
611	722.00	R-3287-15	MH TYPE 'C'	
612	-	-	15" END SECTION	
613	723.00	R-3287-15	INLET TYPE 'B'	
614	723.00	R-3287-15	MH TYPE 'C'	
615	-	-	18" END SECTION	
616	-	-	18" END SECTION	
617	-	-	18" END SECTION	
618	-	-	18" END SECTION	
619	-	-	18" END SECTION	
620	-	-	18" END SECTION	
621	-	-	18" END SECTION	
622	-	-	18" END SECTION	
623	-	-	24" END SECTION	
624	722.50	R-3287-15	INLET TYPE 'B'	
625	722.50	R-3287-15	MH TYPE 'C'	
626	-	-	24" END SECTION	
627	-	-	24" END SECTION	
628	723.00	R-3287-15	INLET TYPE 'B'	
629	723.00	R-3287-15	MH TYPE 'C'	
630	-	-	24" END SECTION	
631	-	-	15" END SECTION	
632	722.50	R-3287-15	INLET TYPE 'B'	
633	722.50	R-3287-15	MH TYPE 'C'	
634	-	-	15" END SECTION	
635	722.50	R-3287-15	INLET TYPE 'B'	
636	722.50	R-3287-15	MH TYPE 'C'	
637	-	-	15" END SECTION	
638	722.50	R-3287-15	INLET TYPE 'B'	
639	722.50	R-3287-15	MH TYPE 'C'	
640	-	-	15" END SECTION	
641	722.00	R-3287-15	INLET TYPE 'B'	
642	722.00	R-3287-15	MH TYPE 'C'	
643	-	-	15" END SECTION	
644	722.00	R-3287-15	INLET TYPE 'B'	
645	722.00	R-3287-15	MH TYPE 'C'	
646	-	-	15" END SECTION	
647	722.00	R-3287-15	INLET TYPE 'B'	
648	722.00	R-3287-15	MH TYPE 'C'	
649	-	-	15" END SECTION	
650	722.00	R-3287-15	INLET TYPE 'B'	
651	722.00	R-3287-15	MH TYPE 'C'	
652	-	-	18" END SECTION	
653	-	-	18" END SECTION	
654	-	-	18" END SECTION	
655	-	-	18" END SECTION	
656	-	-	18" END SECTION	
657	-	-	18" END SECTION	
658	-	-	18" END SECTION	
659	-	-	18" END SECTION	
700	-	-	36" TIDEFLEX	BACKFLOW PREVENT
701	721.00	R-1772	MH TYPE 'D'	
702	-	-	36" END SECTION	
703	-	-	24" END SECTION	
704	-	-	24" END SECTION	
705	-	-	24" END SECTION	
706	722.32	R-3010-A	MH TYPE 'C'	
707	722.20	R-3010-A	MH TYPE 'C'	
707A	722.20	R-3286-8V	INLET TYPE 'E'	
711	-	-	18" END SECTION	
712	725.87	R-3010-A	MH TYPE 'C'	
713	725.30	R-3287-10V	MH TYPE 'C'	
717	725.30	R-3286-8V	INLET TYPE 'E'	
758	-	-	48" END SECTION	
760	728.59	R-3287-15	MH TYPE 'K'	
766	728.54	R-3287-10V	INLET TYPE 'B'	
767	728.29	R-3286-8V	INLET TYPE 'E'	
774	722.28	R-3287-15	INLET TYPE 'C'	
775	722.28	R-3286-8V	INLET TYPE 'E'	
776	-	-	24" END SECTION	
776A	722.40	R-1772	MH TYPE 'C'	
783	720.98	R-3010-A	MH TYPE 'C'	
784	725.06	R-3010-A	MH TYPE 'C'	
820	-	-	12" TIDEFLEX	BACKFLOW PREVENT
821	-	-	12" END SECTION	
867	-	-	24" END SECTION	
868	722.12	R-3572-A	INLET TYPE 'C'	
869	721.77	R-3287-15	INLET TYPE 'C'	
870	721.77	R-3287-15	INLET TYPE 'B'	
871	-	-	15" END SECTION	
872	721.80	R-3286-8V	INLET TYPE 'F'	
873	721.65	R-3286-8V	INLET TYPE 'F'	
874	721.65	R-3286-8V	INLET TYPE 'E'	
875	-	-	15" END SECTION	
876	721.00	R-3286-8V	INLET TYPE 'C'	
877	720.80	R-3286-8V	INLET TYPE 'F'	
878	720.80	R-3286-8V	INLET TYPE 'E'	
879	-	-	36" END SECTION	
880	-	-	36" END SECTION	
881	-	-	12" END SECTION	
882	-	-	12" END SECTION	
883	-	-	30" END SECTION	
884	719.85	R-3572-A	INLET TYPE 'B'	

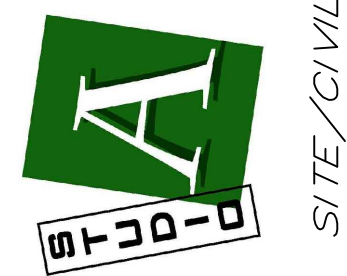


- (A) TYPICAL PAVEMENT SECTION
165#/Syd HMA Surface, 9.5 mm, Type C, PG Binder 70-22 over
330#/Syd HMA Intermediate, 19.0 mm, Type C, PG Binder 64-22 over
660#/Syd HMA Base, 25.0 mm, Type C, PG Binder 64-22 over
8" Compacted #53 Stone
- (B) CHAIRBACK CURB AND GUTTER, TYPE I (6" MIN. CURB HEIGHT)
- (C) CONCRETE SIDEWALK
- (S) PERMANENT SEEDING, SEE EROSION CONTROL PLANS
- (T) SUBGRADE TREATMENT TREATMENT TYPE II (INDOT SPECIFICATIONS SECTION 207)
- (U) UNDERDRAINS - SEE DETAIL

**TYPICAL SECTION
ACCESS ROAD**



Studio A of Indianapolis
9511 East 96th Street
Indianapolis, IN 46256
(317) 585.0834
www.studioAindy.com



CERTIFIED BY
JAMES T. BARNES
REGISTERED
No. PE10808981
STATE OF INDIANA
PROFESSIONAL ENGINEER

I-65 SOUTH COMMERCE PARK
CITY OF FRANKLIN, JOHNSON COUNTY, INDIANA
DETAIL SHEET

SUNBEAM
11800 EXIT FIVE PARKWAY
FISHERS, INDIANA 46037

ORIGINAL ISSUE 6/30/2022
JOB NO. 220001
DRAWN BY: AMM
CHECKED BY: MLM

REVISIONS

SHEET NO.
DP-7